

CAMI•MADE

HIDDEN POCKETS

Test square
10cm x 10cm

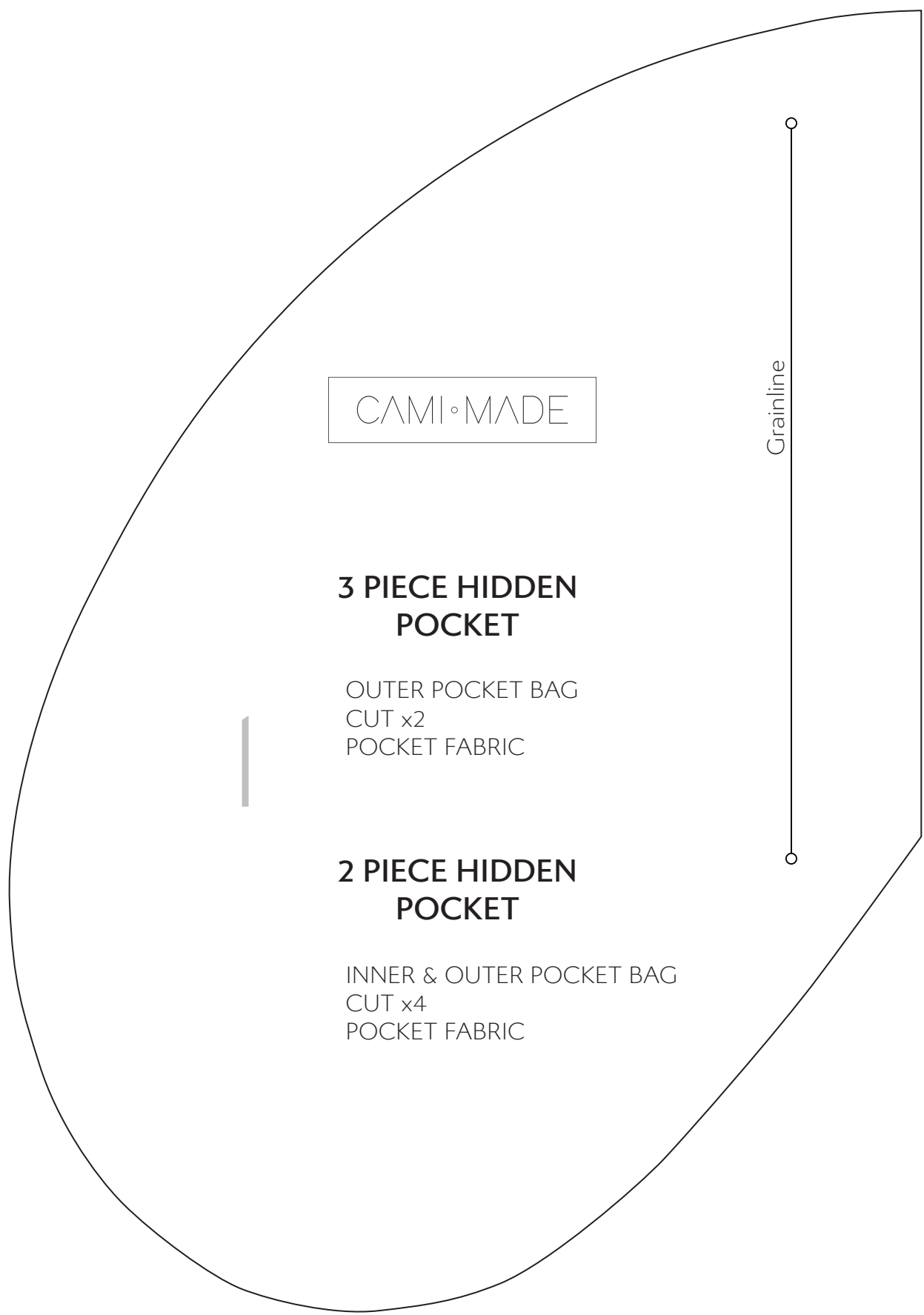
CAMI•MADE

3 PIECE HIDDEN POCKET

POCKET FACING
CUT x2
MAIN FABRIC

3

Grainline



CAMI•MADE

**3 PIECE HIDDEN
POCKET**

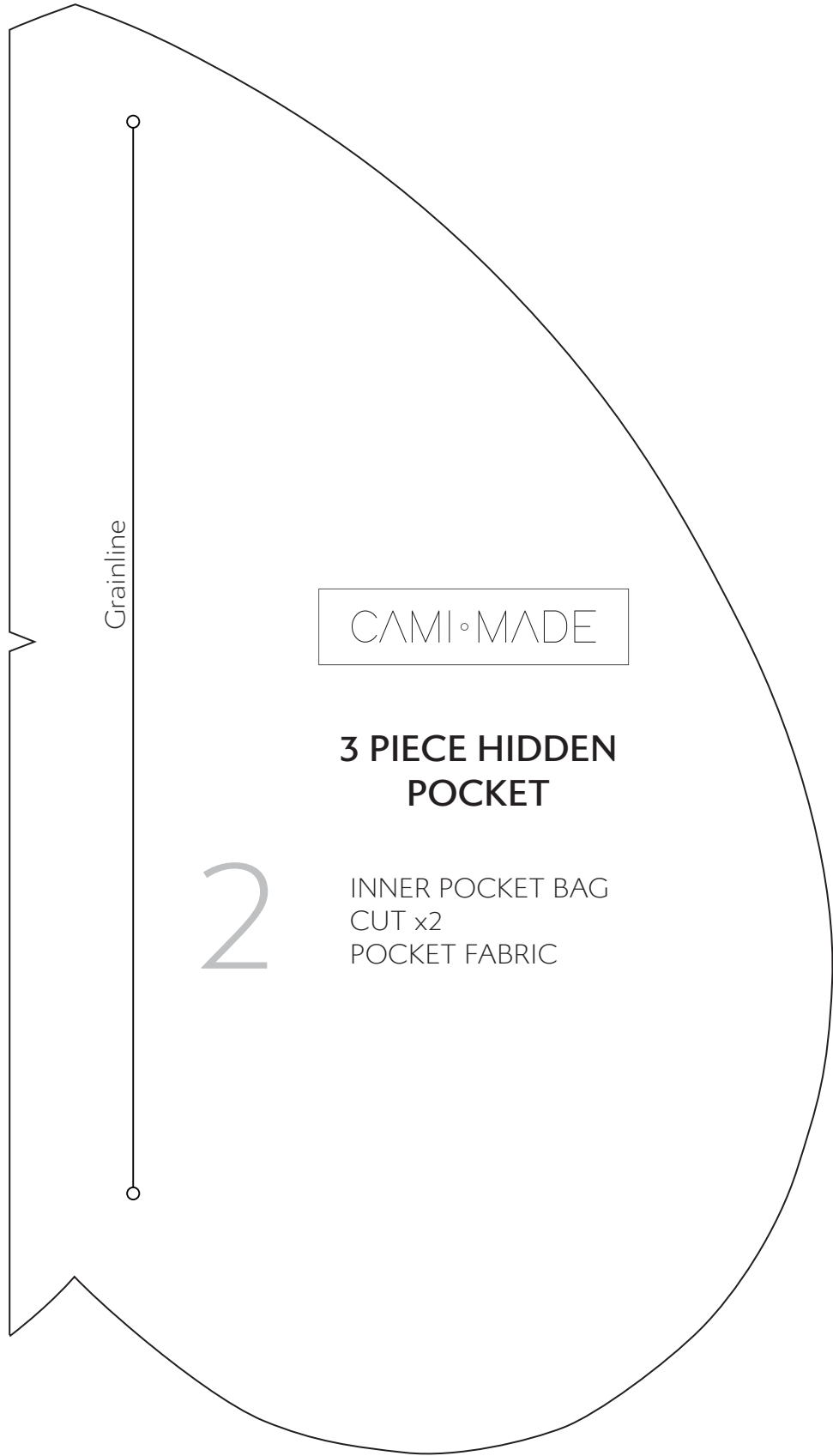
OUTER POCKET BAG
CUT x2
POCKET FABRIC



Grainline

**2 PIECE HIDDEN
POCKET**

INNER & OUTER POCKET BAG
CUT x4
POCKET FABRIC



CAMI•MADE

**3 PIECE HIDDEN
POCKET**

2

INNER POCKET BAG
CUT x2
POCKET FABRIC