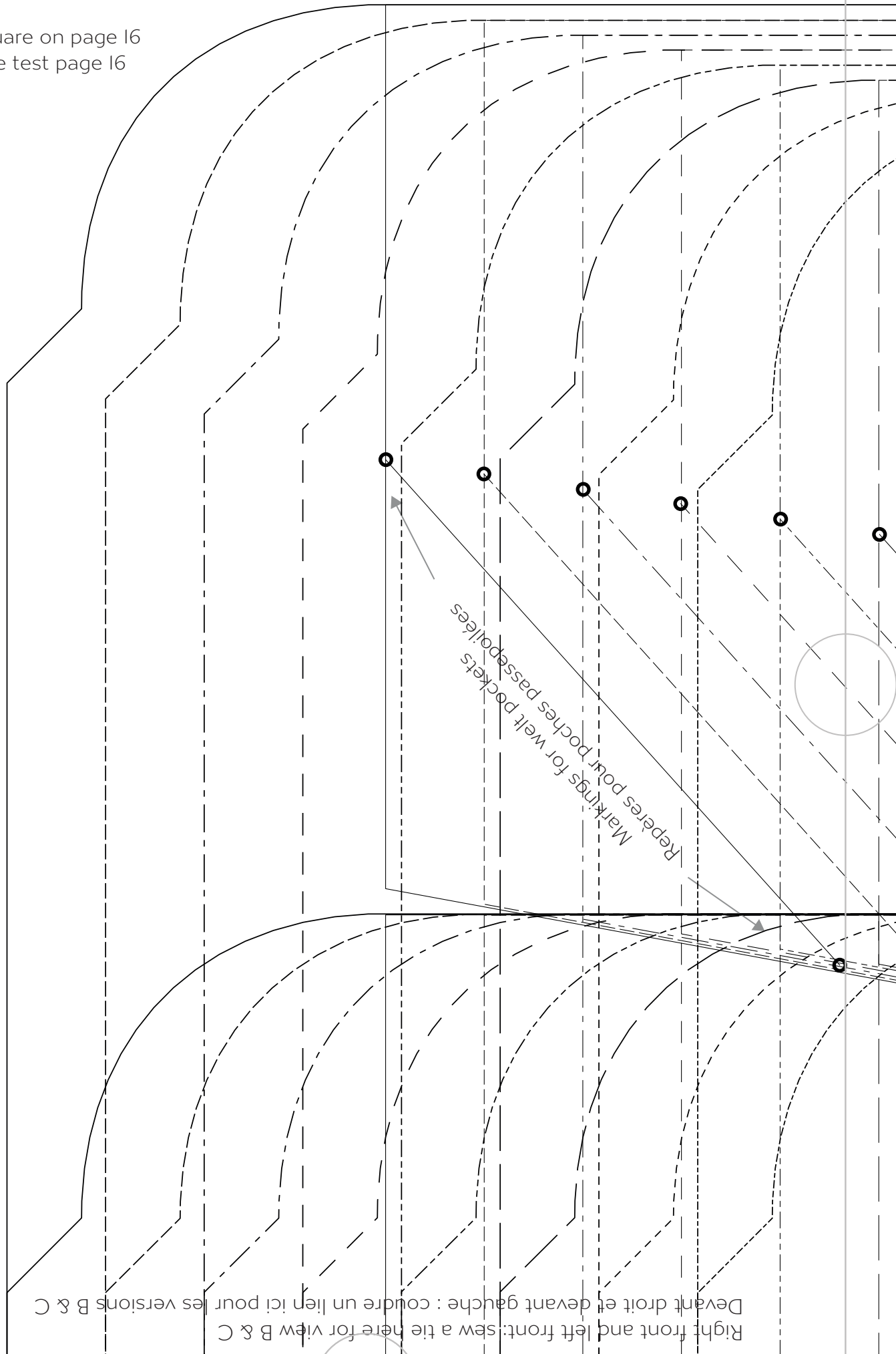
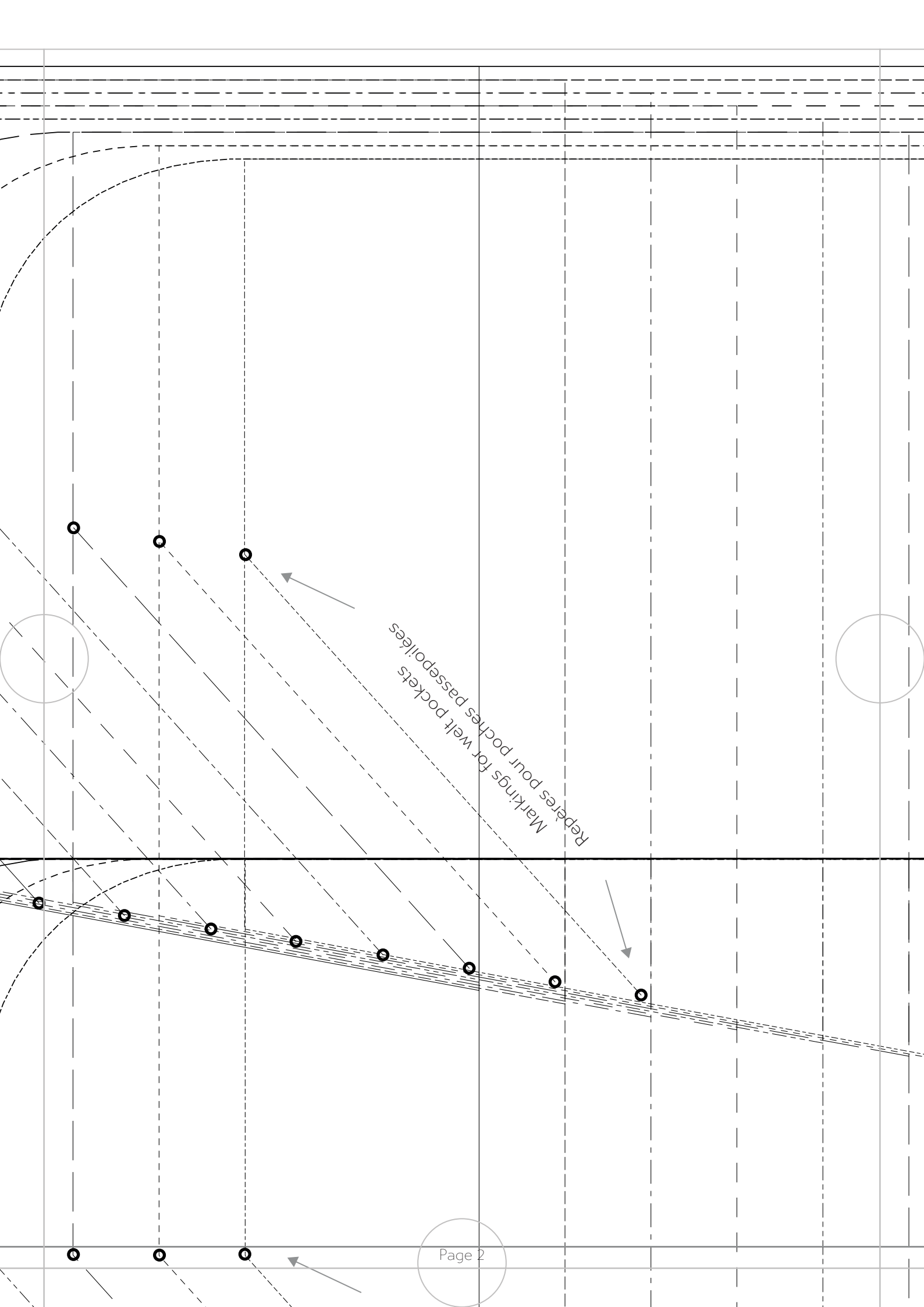


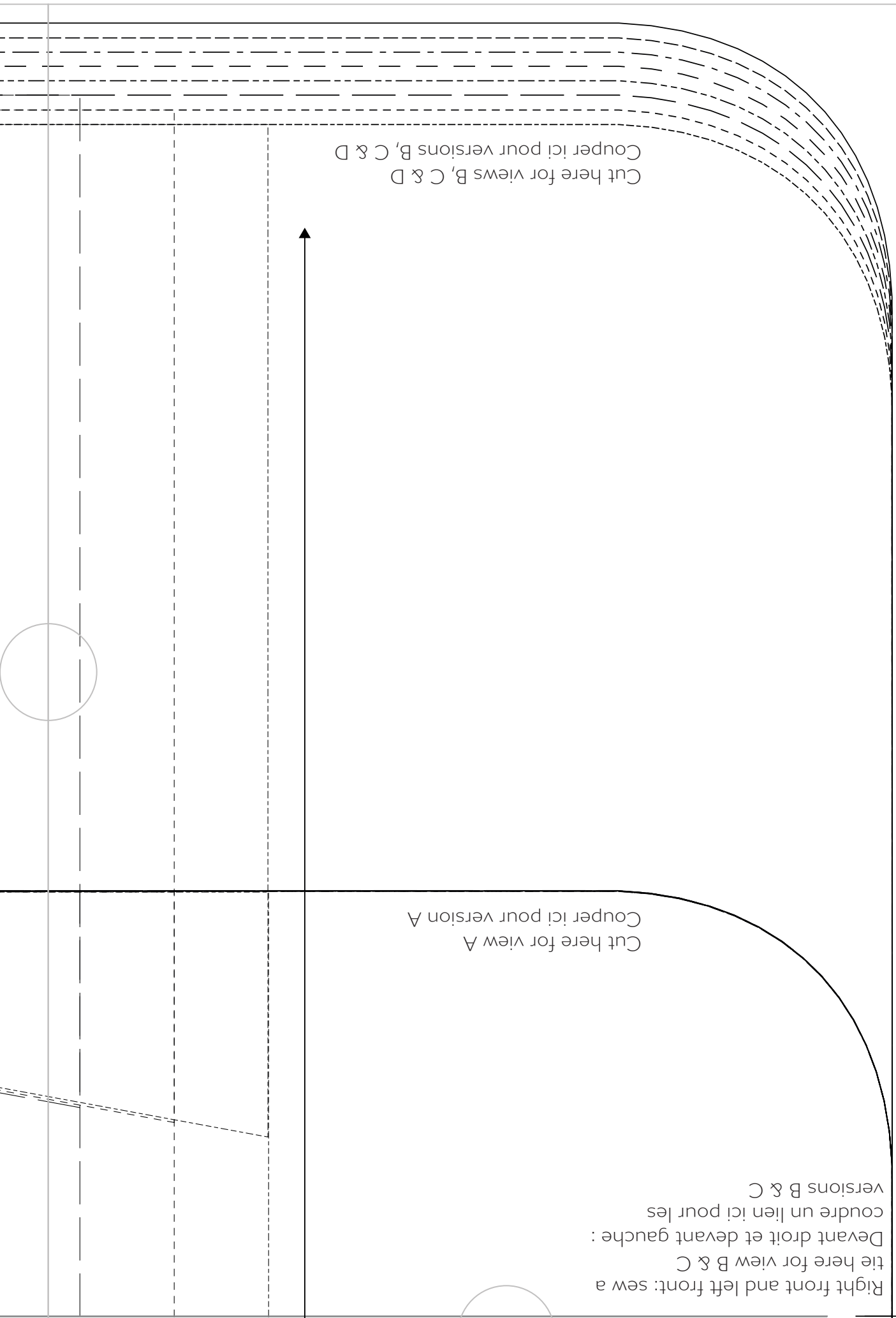
Test square on page 16  
Carré de test page 16



Right front and left front: sew a tie here for view B & C  
Devant droit et devant gauche : coudre un lien ici pour les versions B & C



Markings for welt pockets  
Reperes pour poches passepoilées

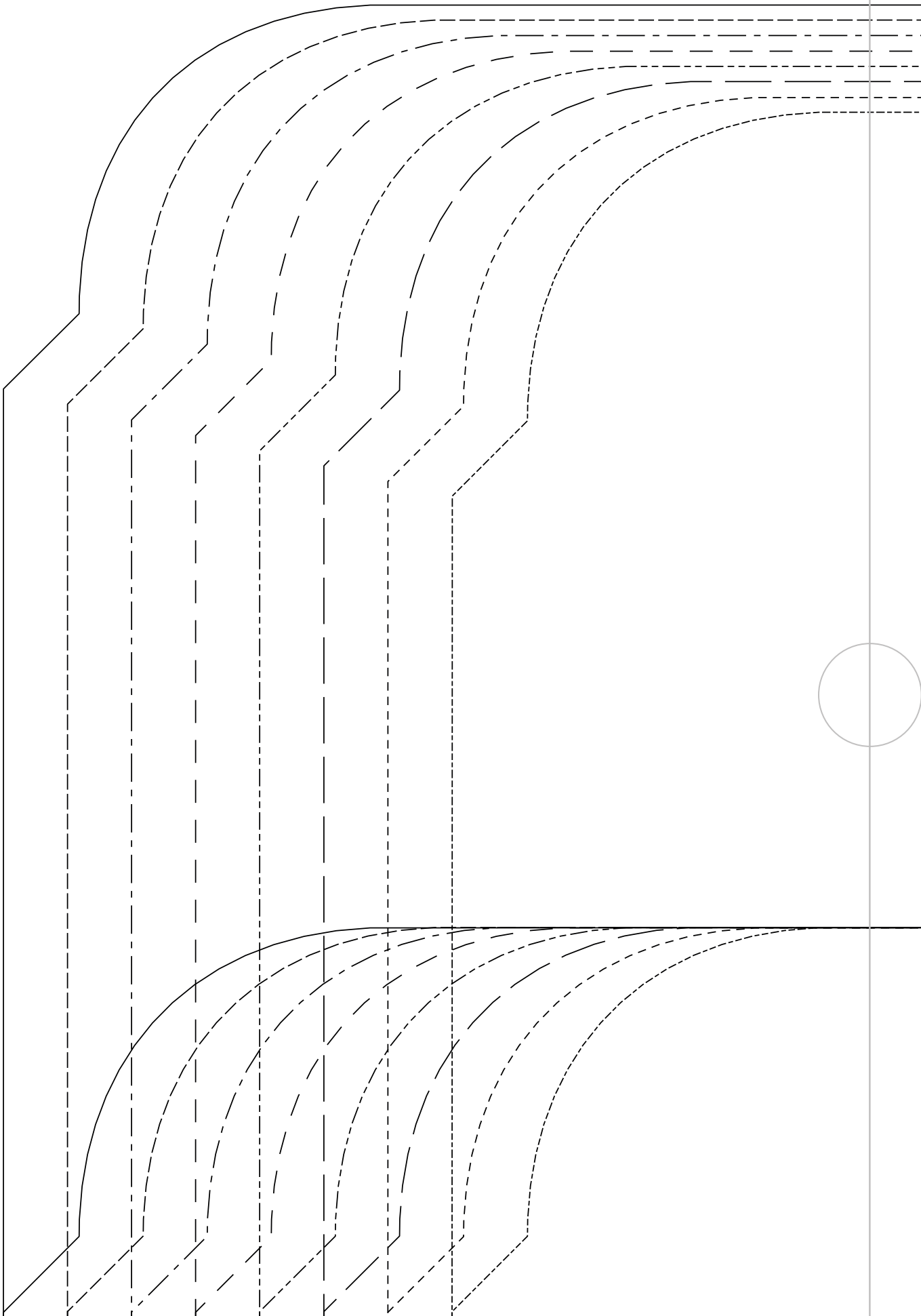


Cut here for views B, C & D  
 Couper ici pour versions B, C & D

Cut here for view A  
 Couper ici pour version A

Right front and left front: sew a tie here for view B & C  
 Devant droit et devant gauche : coudre un lien ici pour les versions B & C

Version C : coudre la coulisse entre ces deux lignes



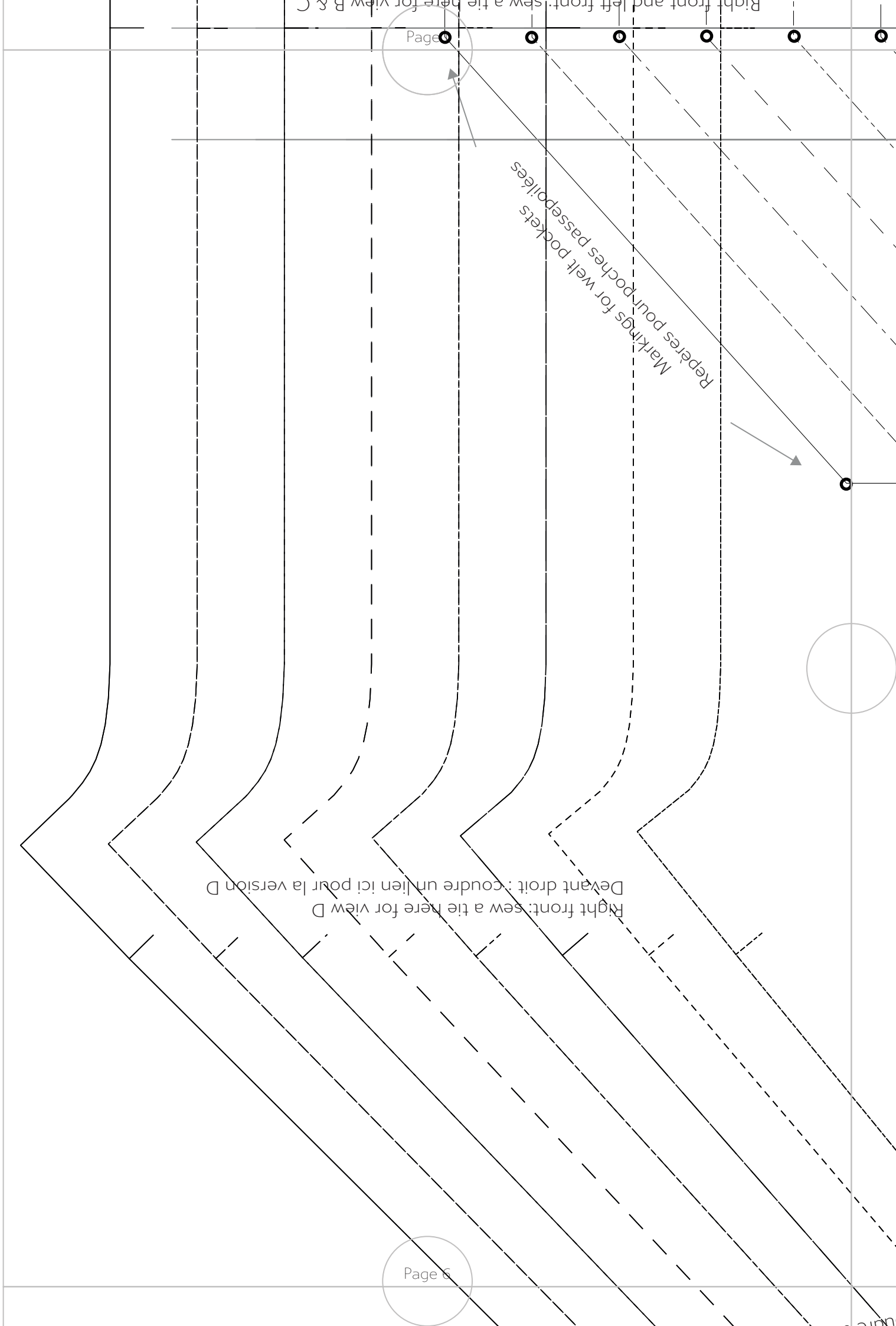
Cut here for view A  
Couper ici pour version A

Cut here for views B, C & D  
Couper ici pour versions B, C & D

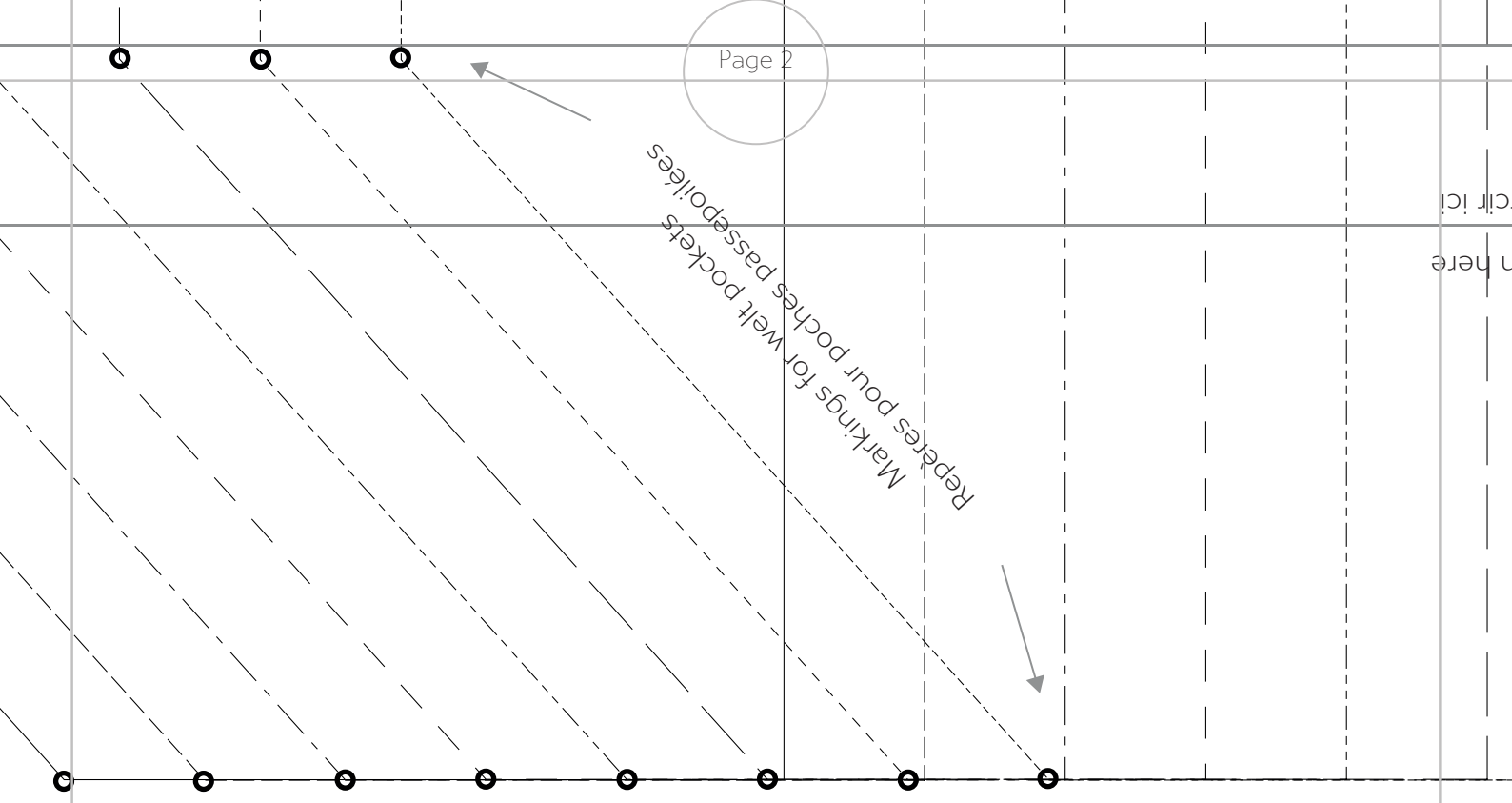


Reperes pour poches passepoilées  
Markings for welt pockets

Right front: sew a tie here for view D  
Devant droit : coudre un lien ici pour la version D



Reparés pour poches passaportes  
Markings for welt pockets



DEVANT  
COUPER x2

FRONT  
CUT x2

017 - COUILLAGE

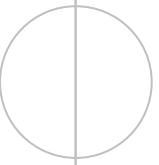
**CAMIMADE**  
PATTERNS

Devant droit : coupe  
Right side : cut

View C: sew the tunnel between these two lines  
Version C : coudre la coulisse entre ces deux lignes

Allonger ou raccourcir ici

Lengthen or shorten here



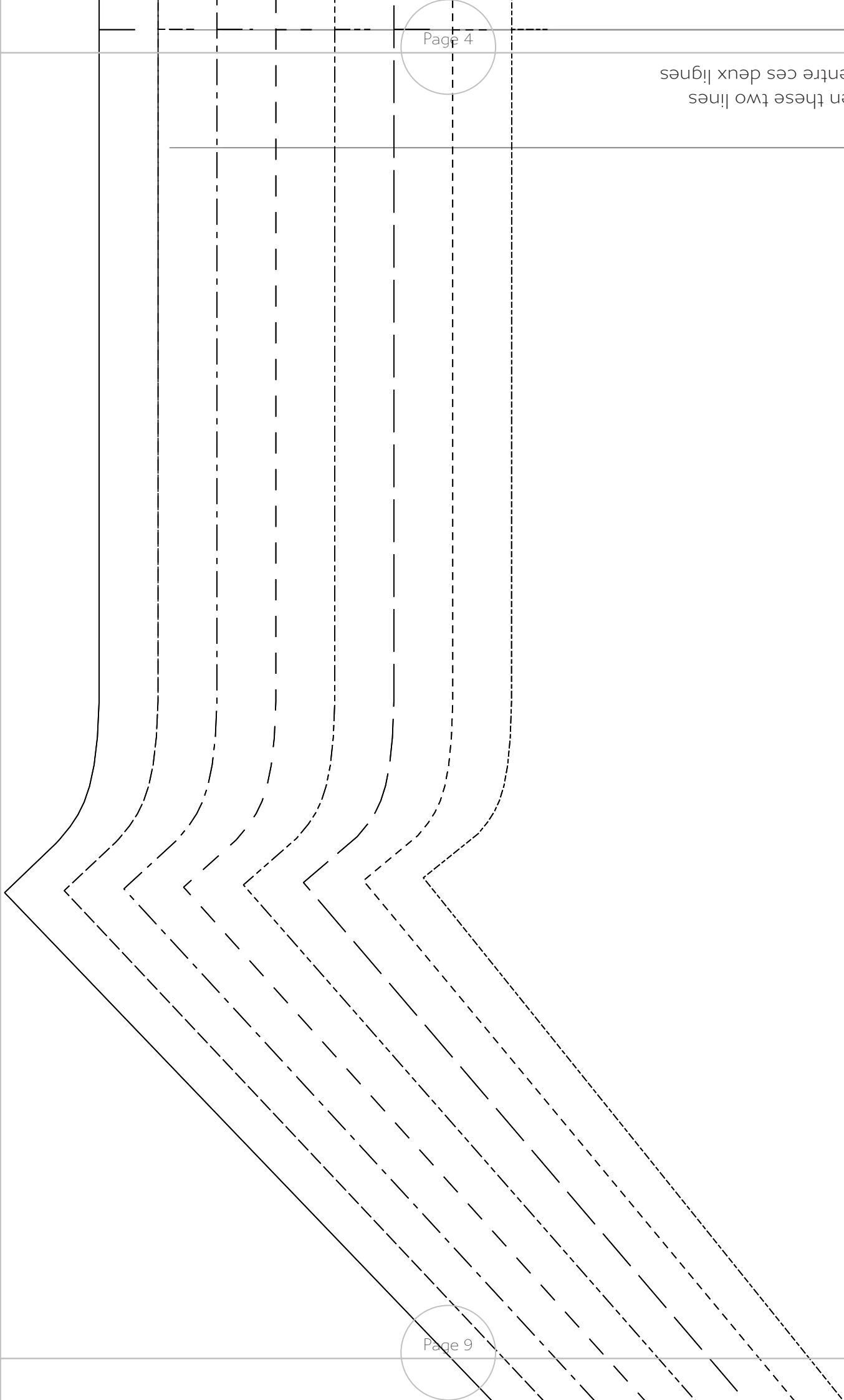
10

Cut here for view D  
Couper ici pour version D

Cut here for views A, B & C  
Couper ici pour versions A, B & C



anel between these two lines  
a coulisse entre ces deux lignes



Lengthen or shorten here  
Allonger ou raccourcir ici!

View C : sew the tunnel between  
Version C : coudre la coulisse

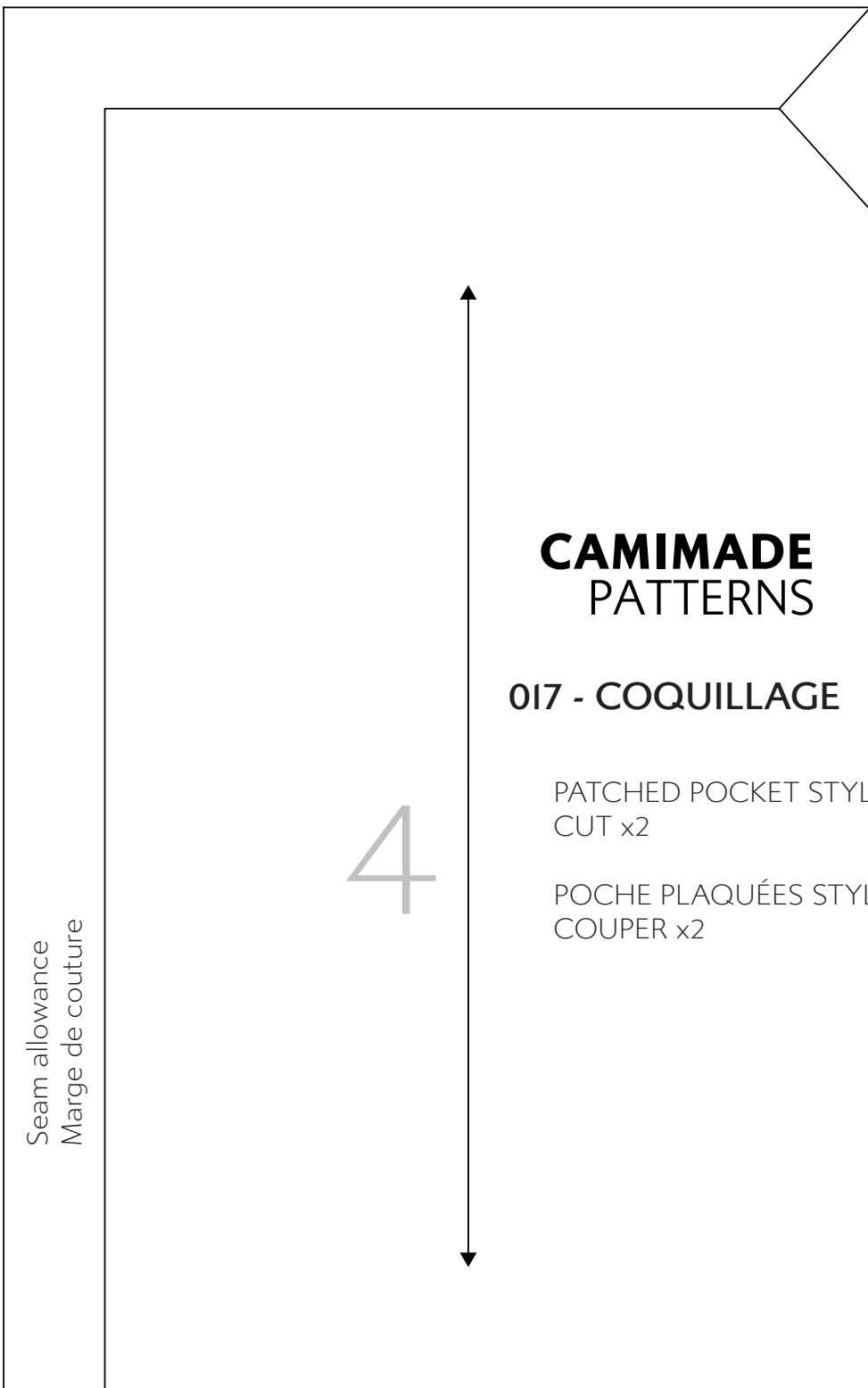
DOS  
COUPER x1 SUR LE PLI

BACK  
CUT x1 ON FOLD

2



the here for view A B & C  
ndre un lien ici pour les versions A B & C



# CAMIMADE PATTERNS

## 017 - COQUILLAGE

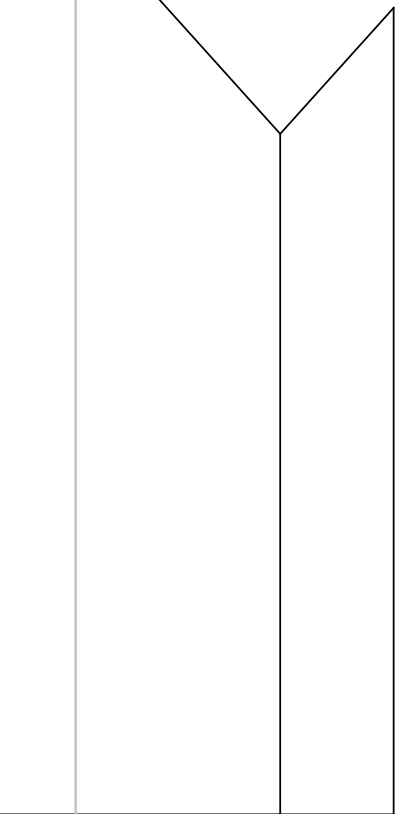
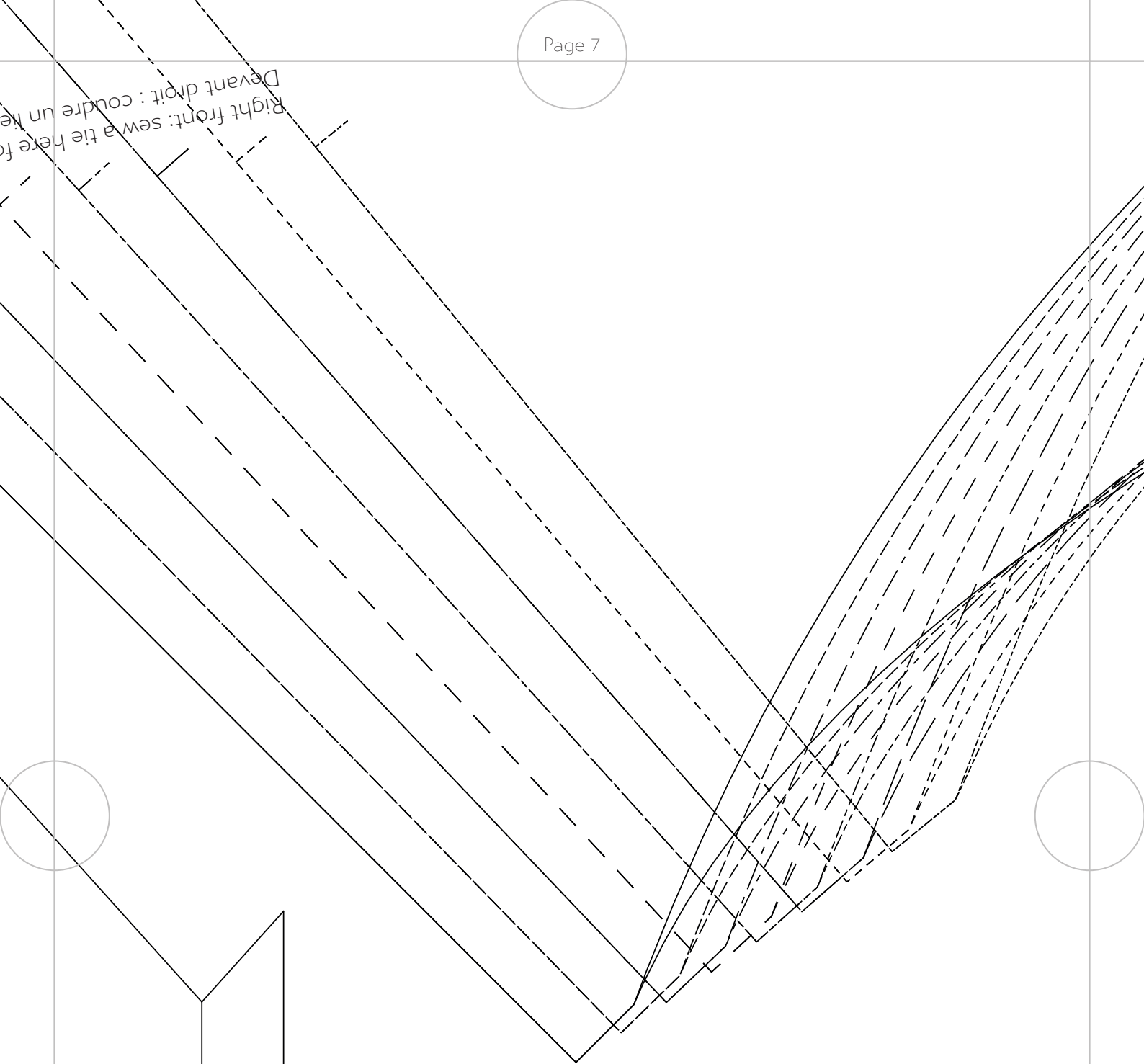
PATCHED POCKET STYLE I  
CUT x2

POCHE PLAQUÉES STYLE I  
COUPER x2

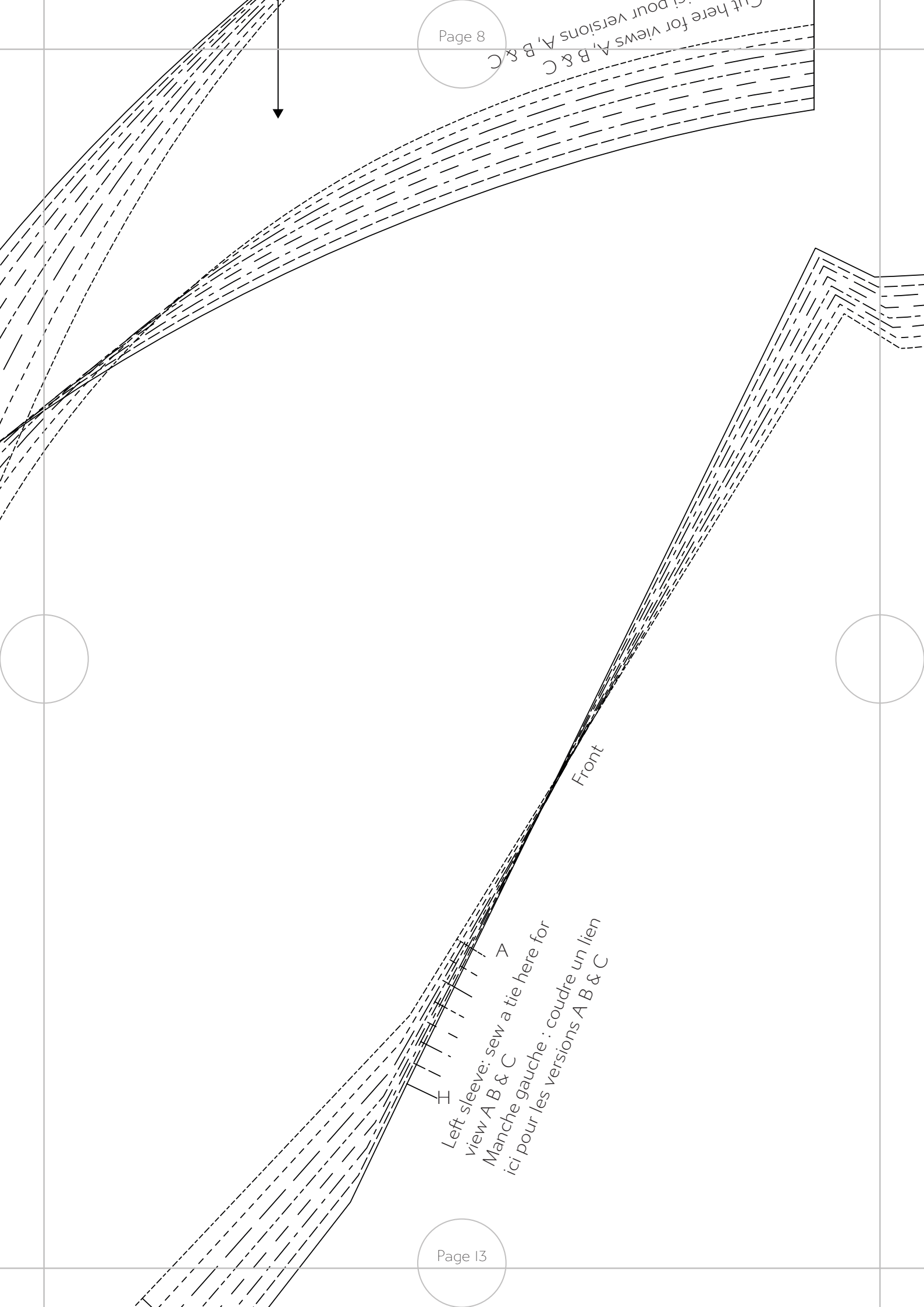
Seam allowance  
Marge de couture

4

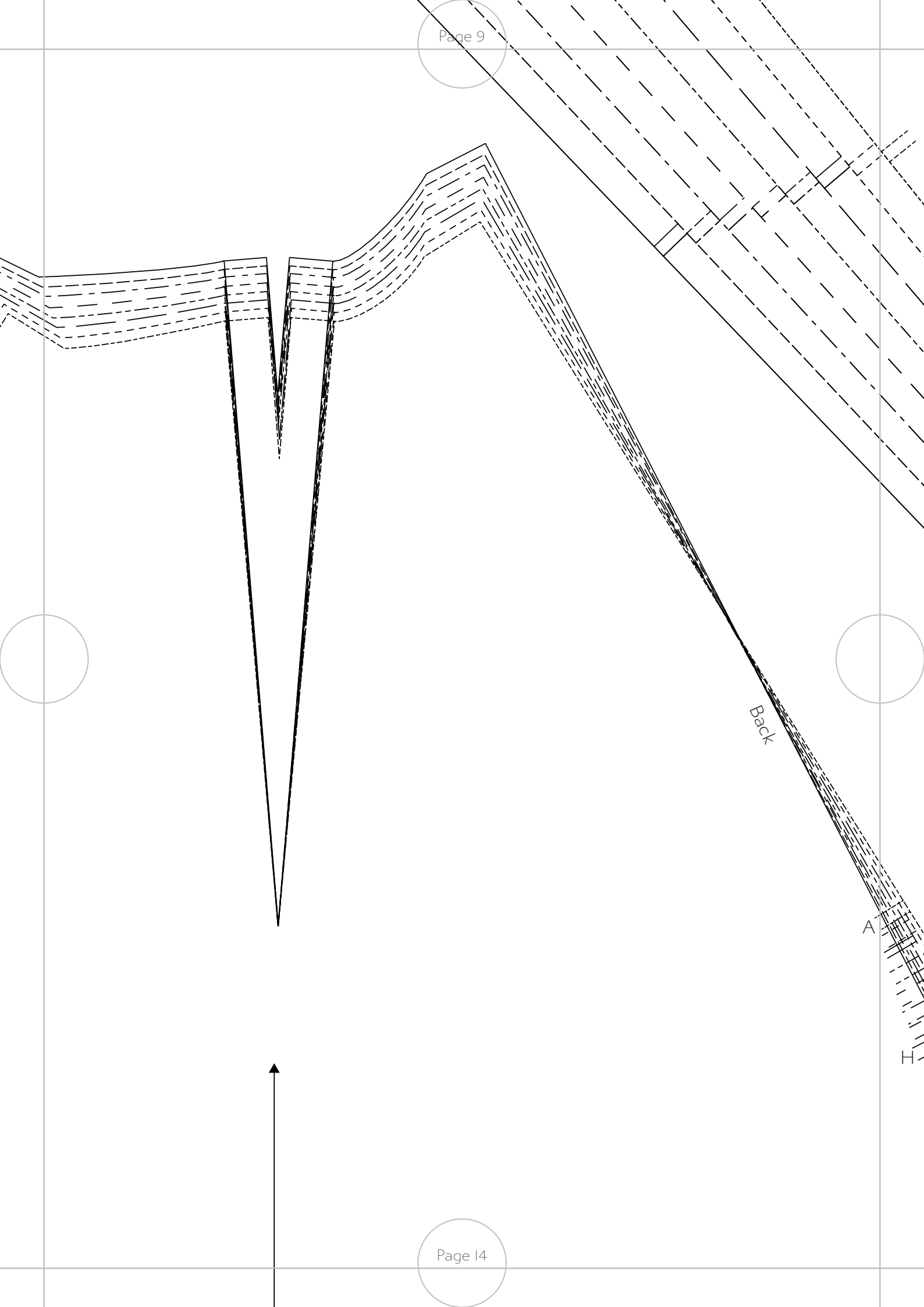
Right front: sew a tie here for  
Devant droit : coudre un tie



Cut here for views A, B & C  
ici pour versions A, B & C



Left sleeve: sew a tie here for  
view A B & C  
Manche gauche : coudre un lien  
ici pour les versions A B & C



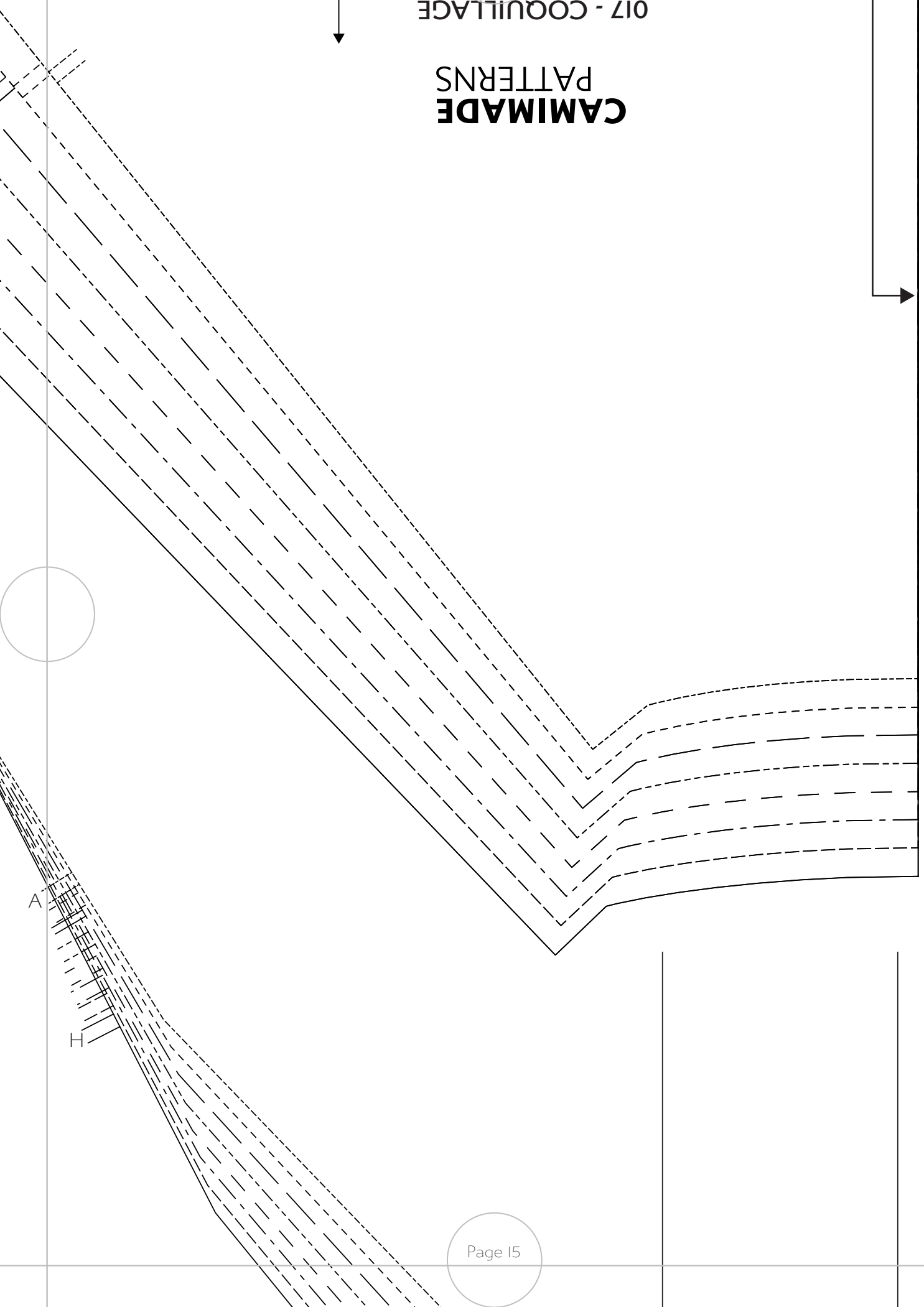
Back

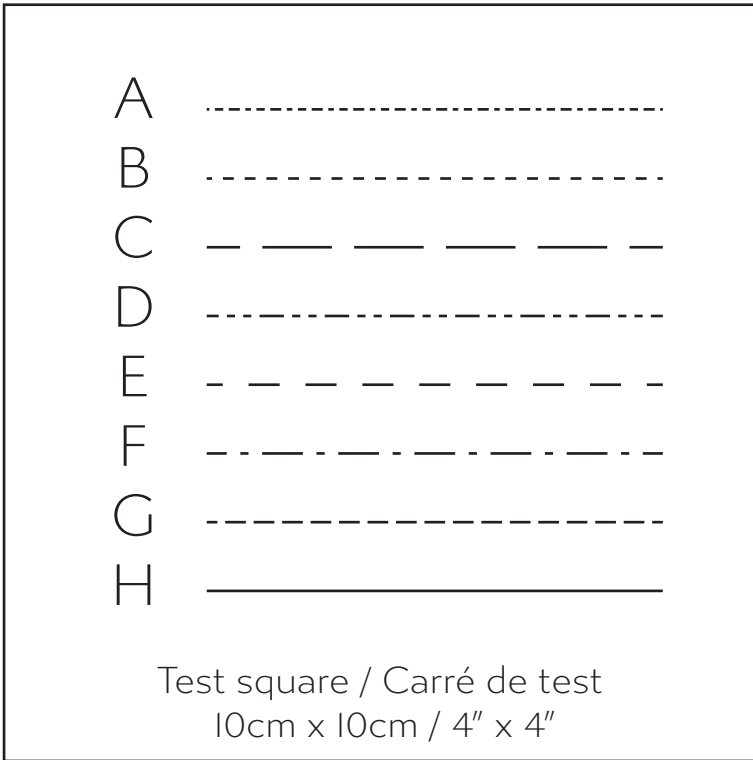
A

H

017 - COQUILLAGE

# CAMMADE PATTERNS

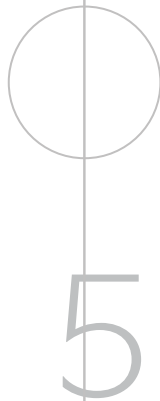
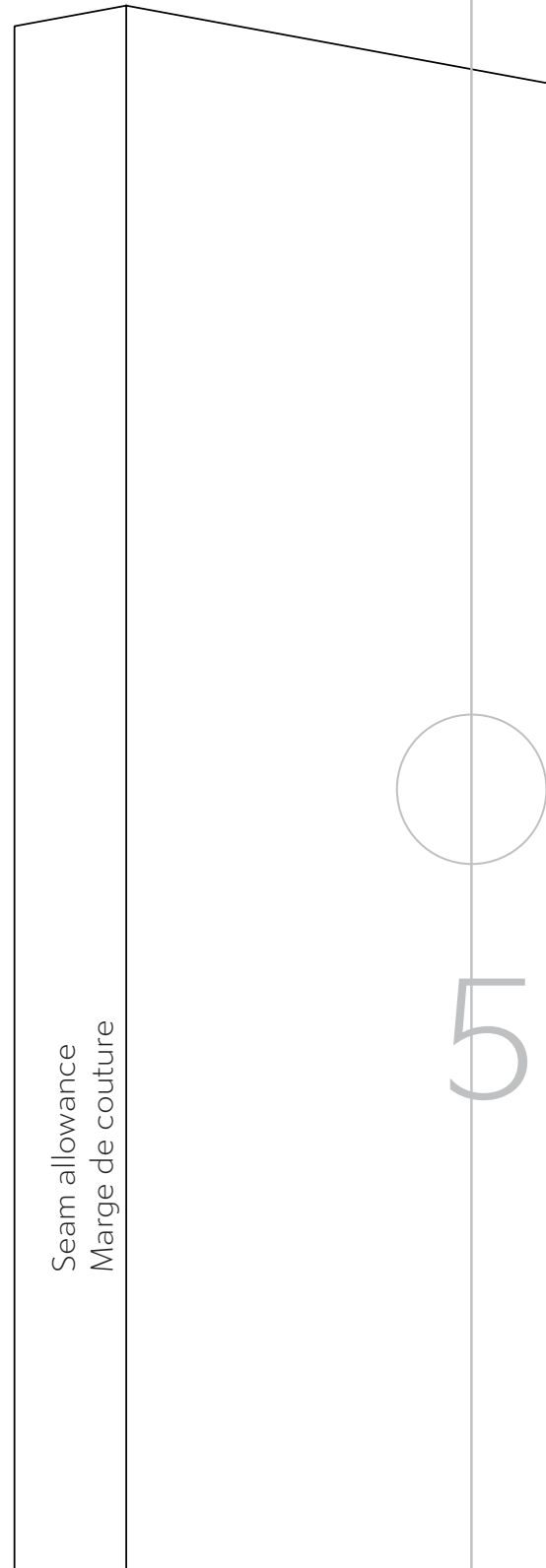




# CAMIMADE PATTERNS

## 017 - COQUILLAGE #CamimadeCoquillage

© 2023 Camimade Patterns  
[www.camimade.com](http://www.camimade.com)  
For personal use only  
Uniquement pour usage personnel



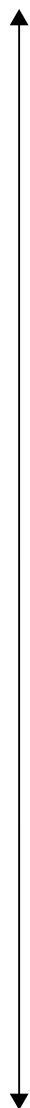


# CAMIMADE PATTERNS

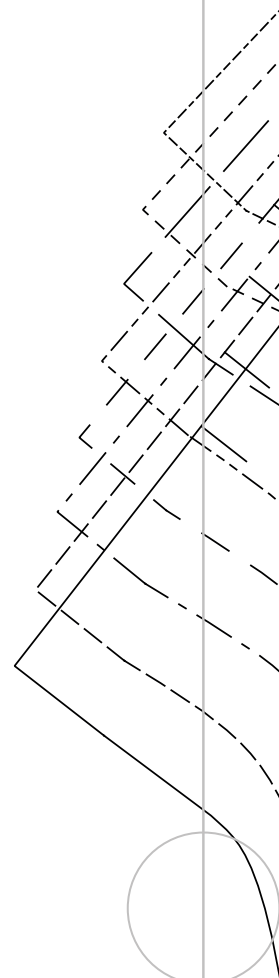
## 017 - COQUILLAGE

PATCHED POCKET STYLE 2  
CUT x2

POCHE PLAQUÉES STYLE 2  
COUPER x2



5



# CAMIMA PATTER

## 017 - COQUIL

SLEEVE  
CUT x2

MANCHE  
COUPER x2

3

Left sleeve, sew a tie here  
for view D  
Manche gauche : coudre un  
lien ici pour la version D

Lengthen or shorten here

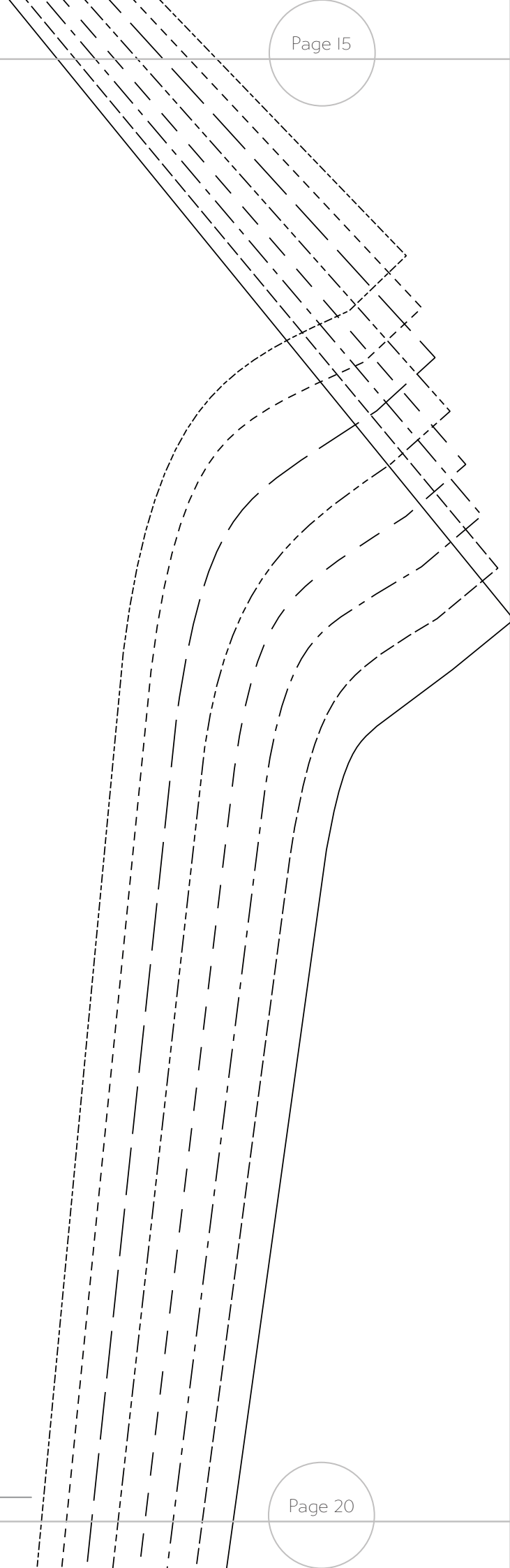
Allonger ou raccourcir ici

# MIMADE PATTERNS

## COQUILLAGE

EVE  
T x2

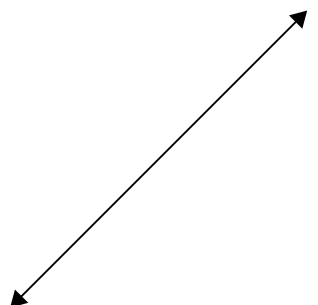
NCHE  
UPER x2



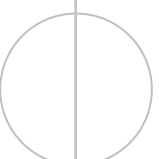
**CAMIMADE  
PATTERNS**

017 - COQUILLAGE

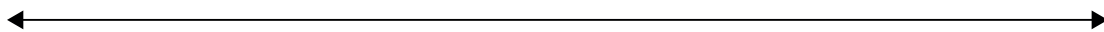
9



BIAS GUIDE  
CUT LENGTH INDICATED IN THE INSTRUCTIONS  
GUIDE BIAIS  
COUPER LA LONGUEUR INDIQUEE DANS LES  
INSTRUCTIONS



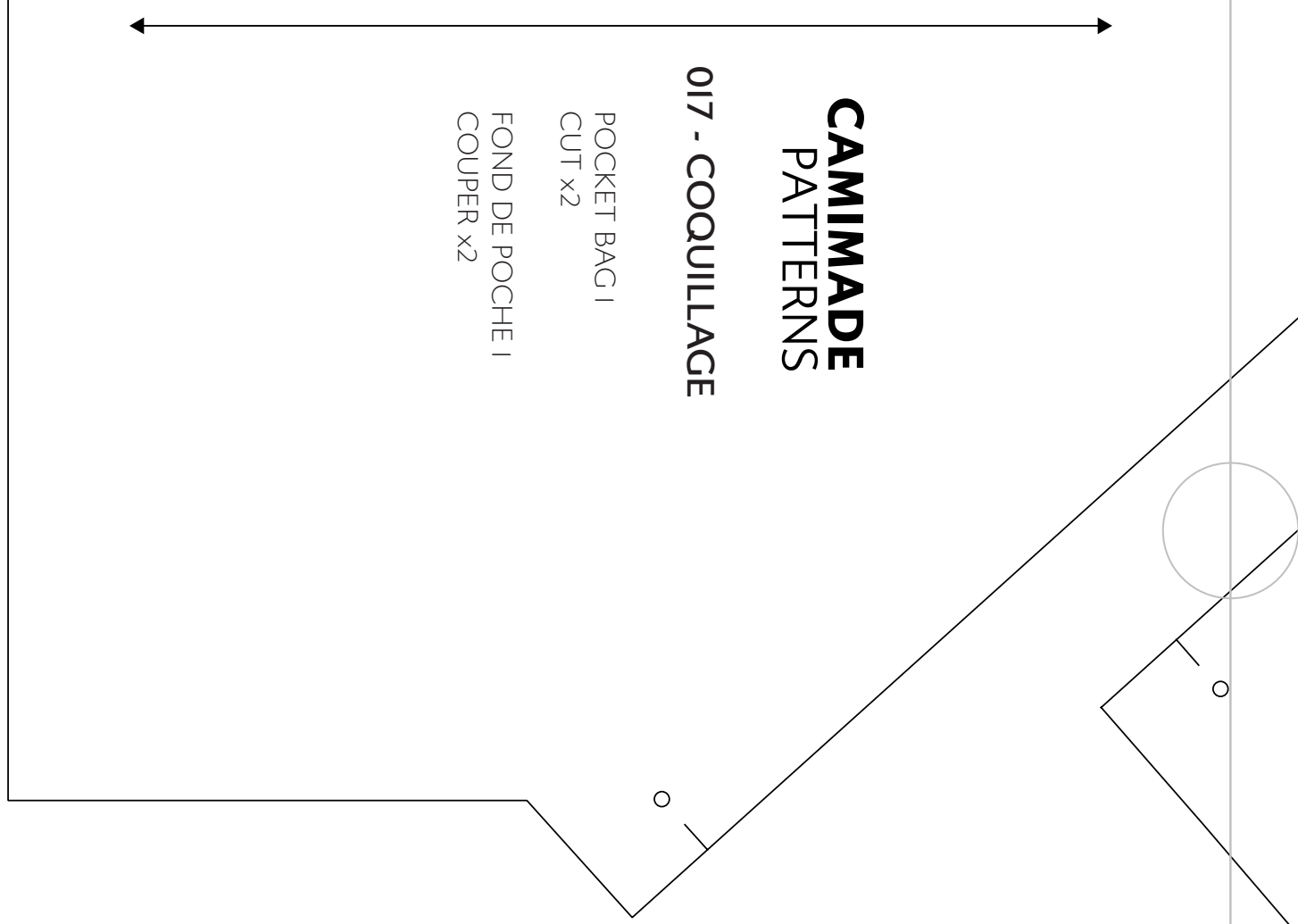
6



**CAMIMADE  
PATTERNS**

**017 - COQUILLAGE**

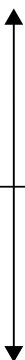
POCKET BAG 1  
CUT x2  
FOND DE POCHE 1  
COUPER x2



**CAMIMADE  
PATTERNS**

**017 - COQUILLAGE**

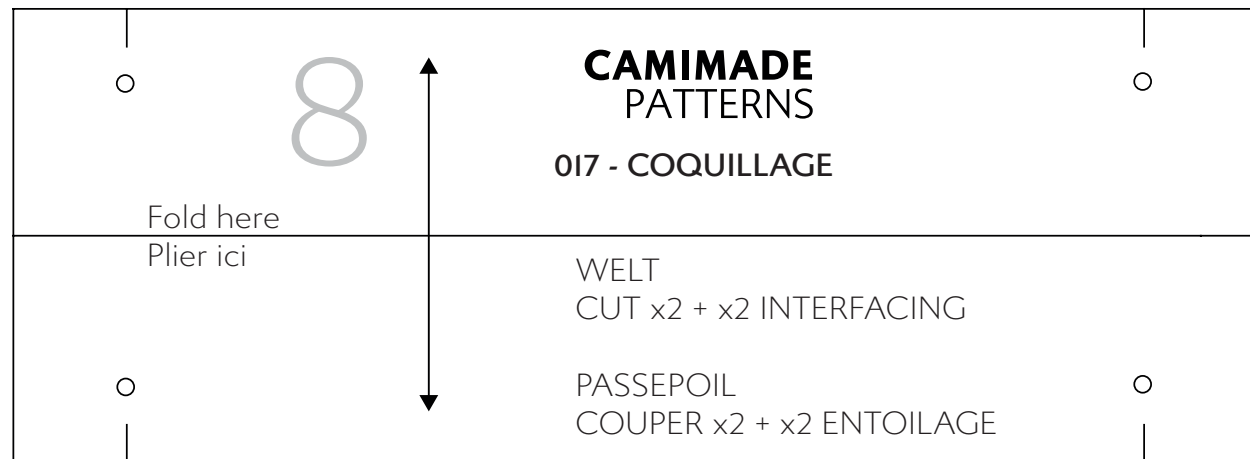
8

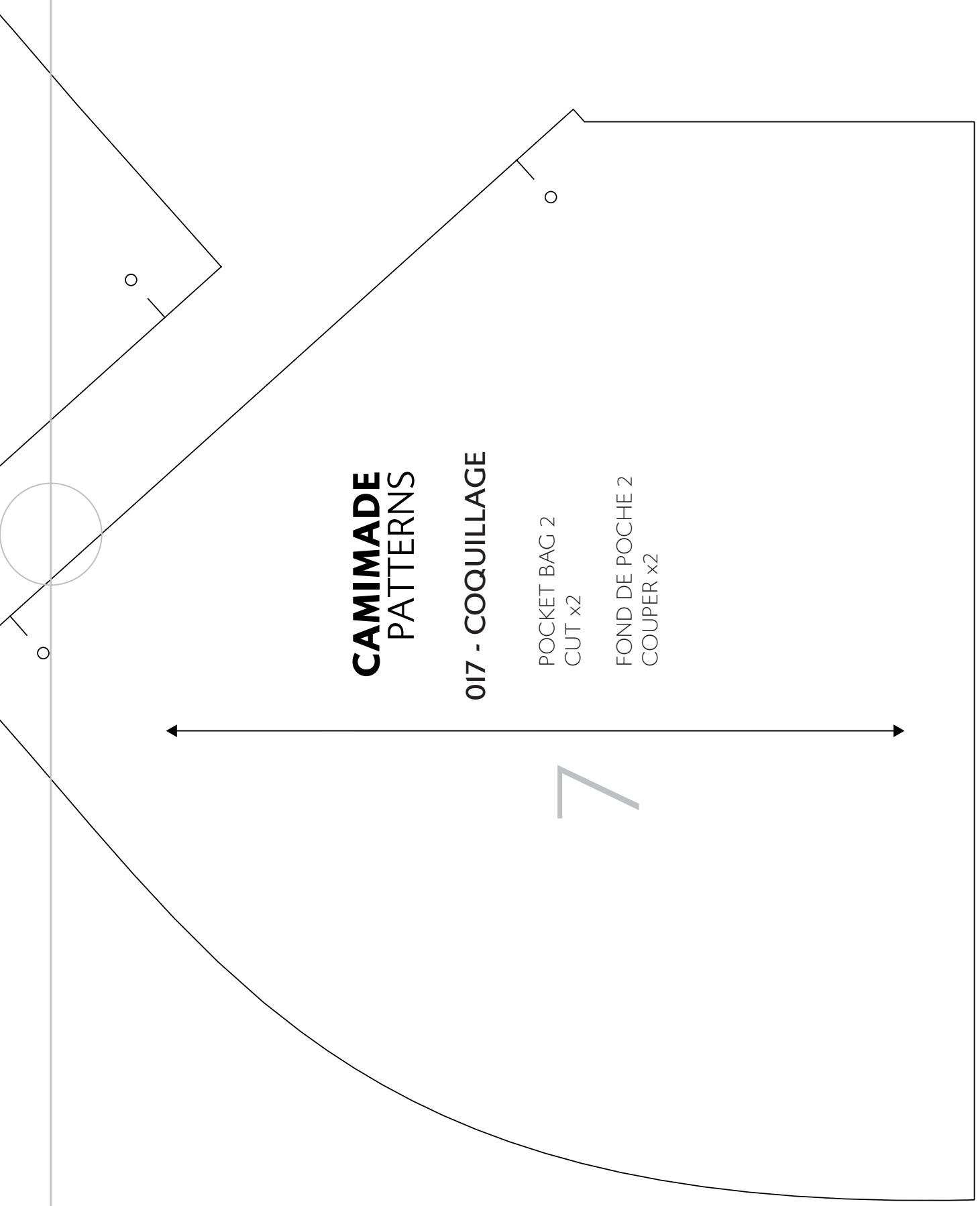


Fold here  
Plier ici

WELT  
CUT x2 + x2 INTERFACING

PASSEPOIL  
COUPER x2 + x2 ENTOILAGE



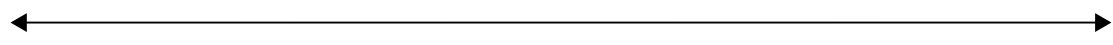


# CAMIMADE PATTERNS

## 017 - COQUILLAGE

POCKET BAG 2  
CUT x2

FOND DE POCHE 2  
COUPER x2



7

Lengthen or shorten here

Page 18

Allonger ou raccourcir ici

