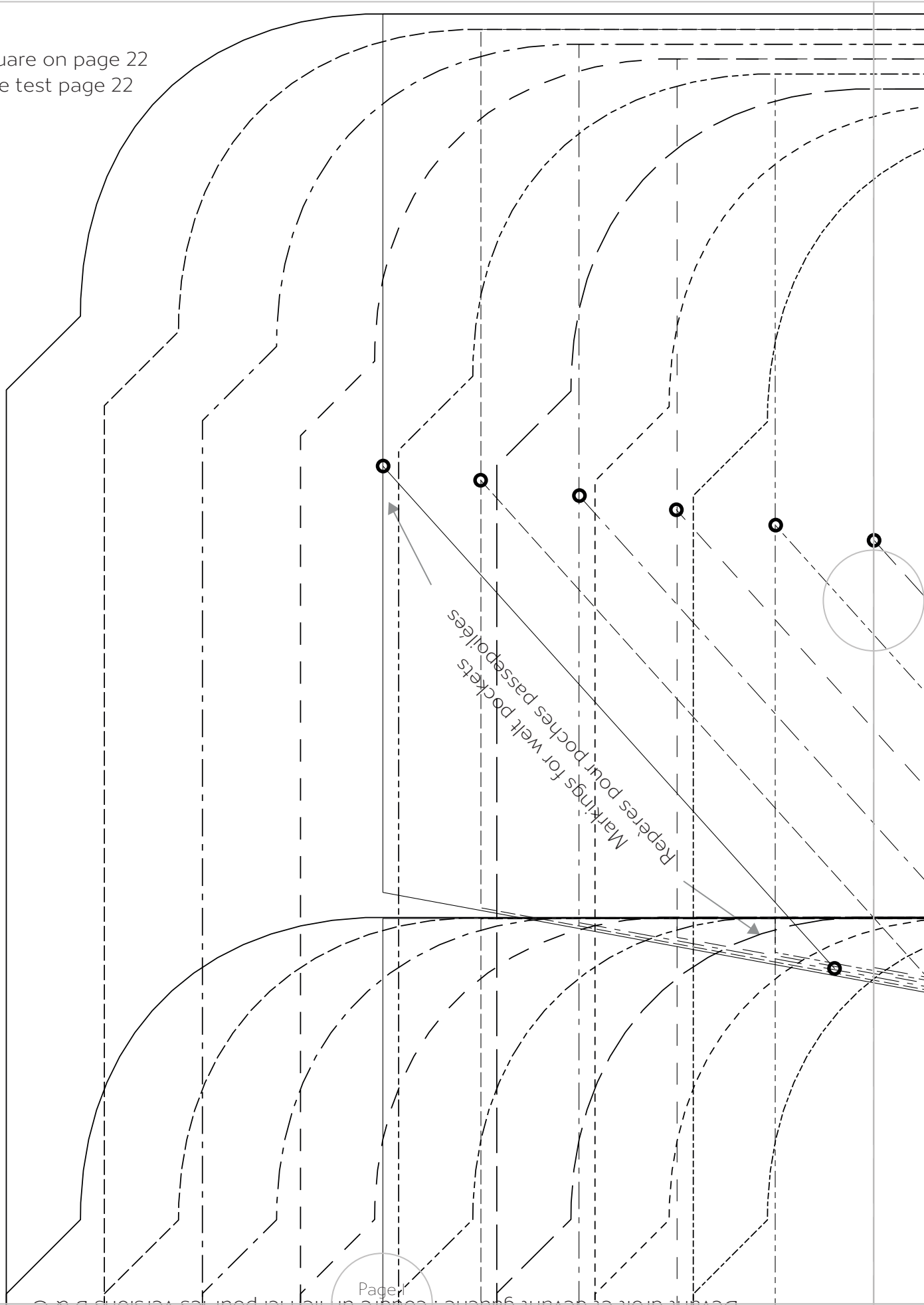
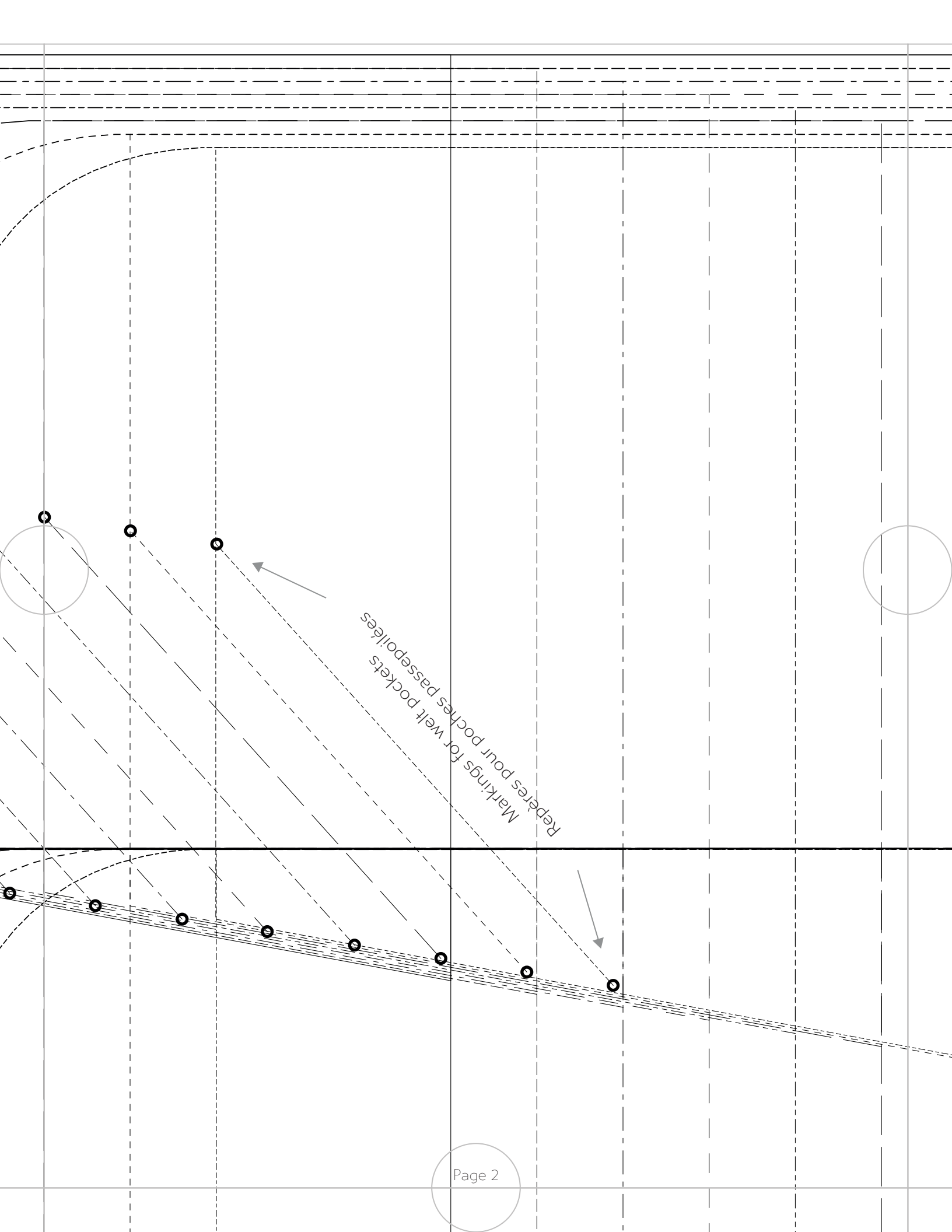


Test square on page 22  
Carré de test page 22

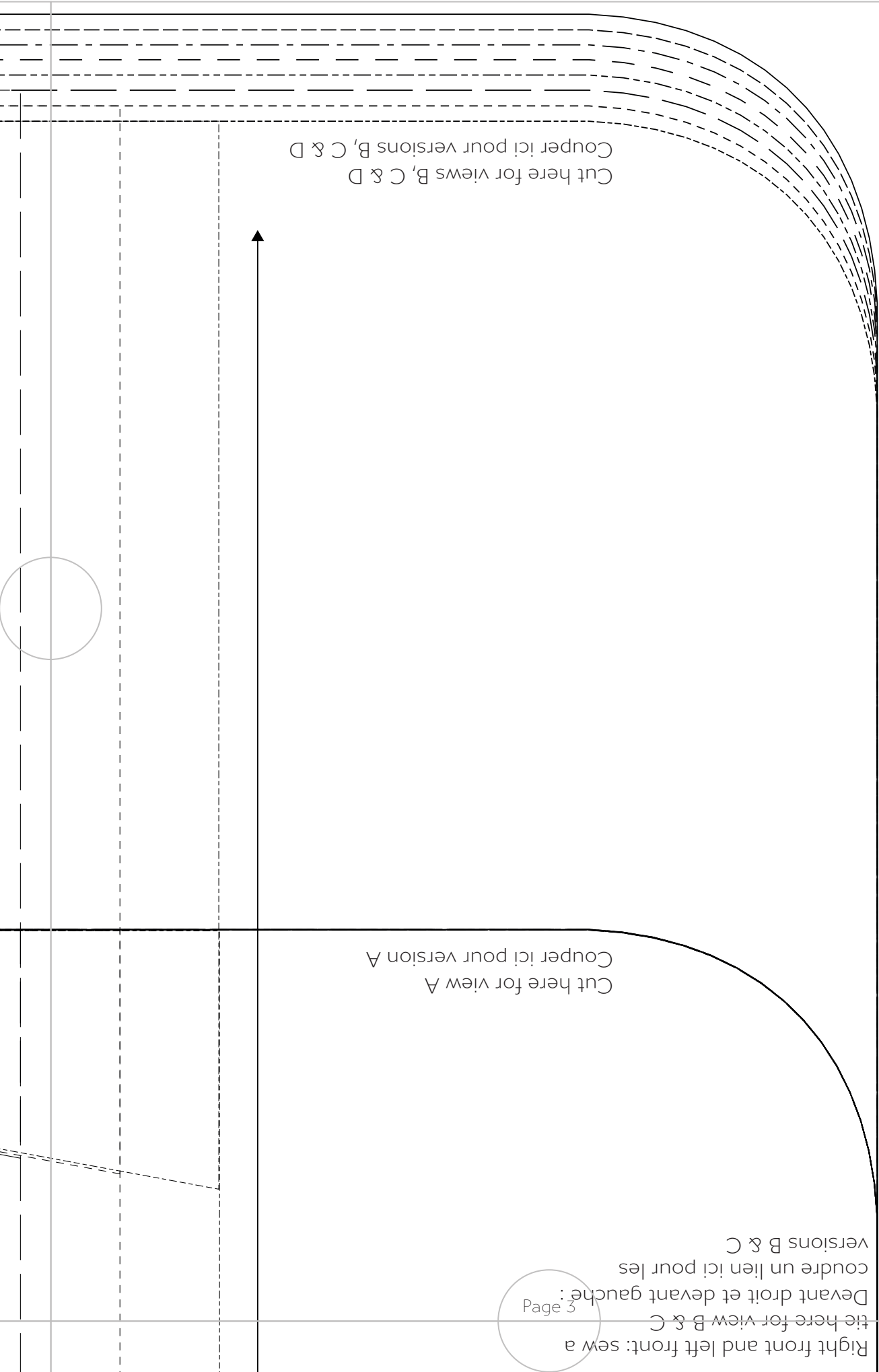


Reperes pour welt pockets  
Markings for welt pockets

Right front and left front: sew a tie here for view B & C  
Devant droit et devant gauche: coudre un lien ici pour les versions B & C



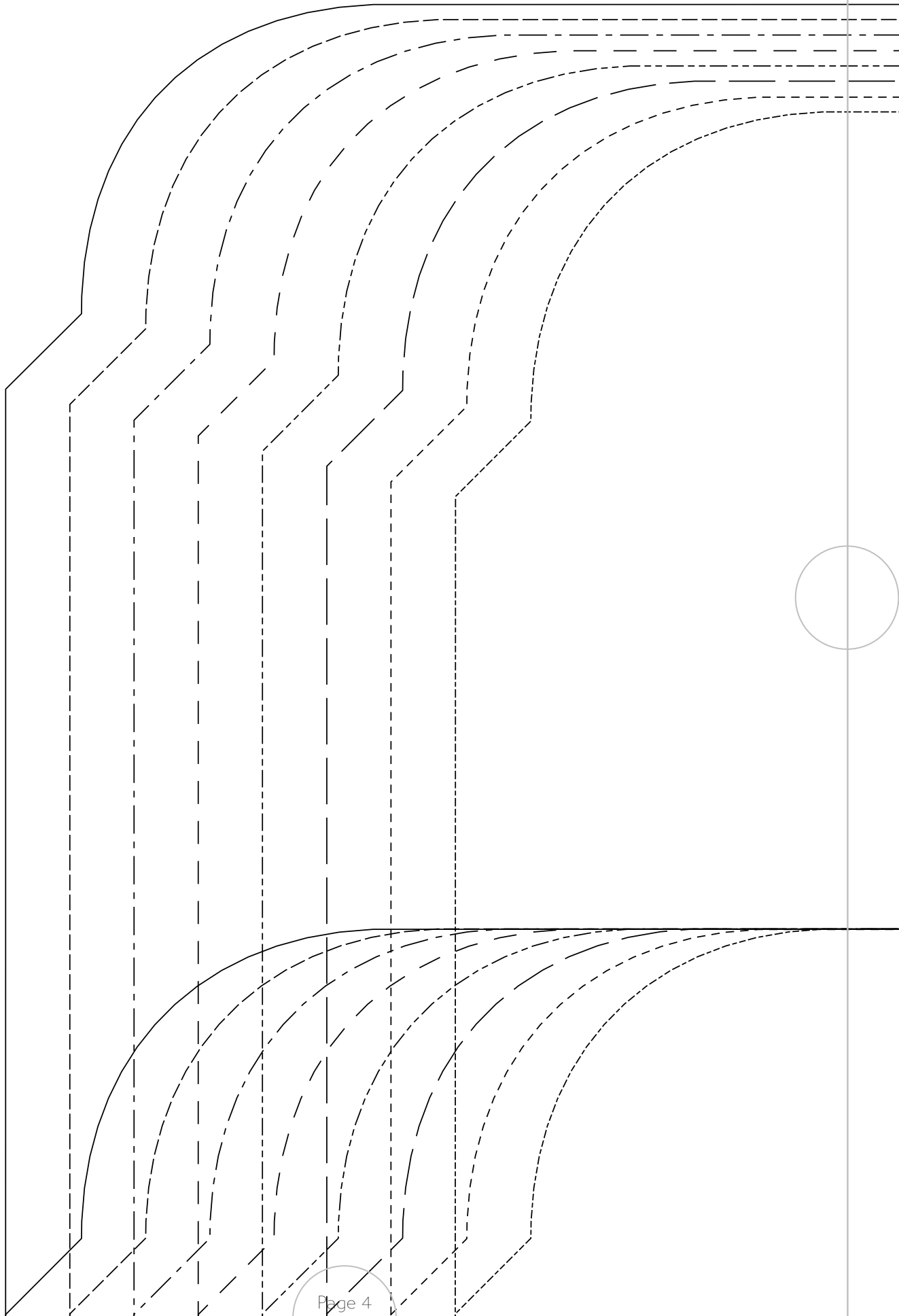
Markings for welt pockets  
Reperes pour poches passepoilées



Right front and left front: sew a  
tie here for view B & C  
Devant droit et devant gauche :  
coudre un lien ici pour les  
versions B & C

Cut here for view A  
Couper ici pour version A

Cut here for views B, C & D  
Couper ici pour versions B, C & D



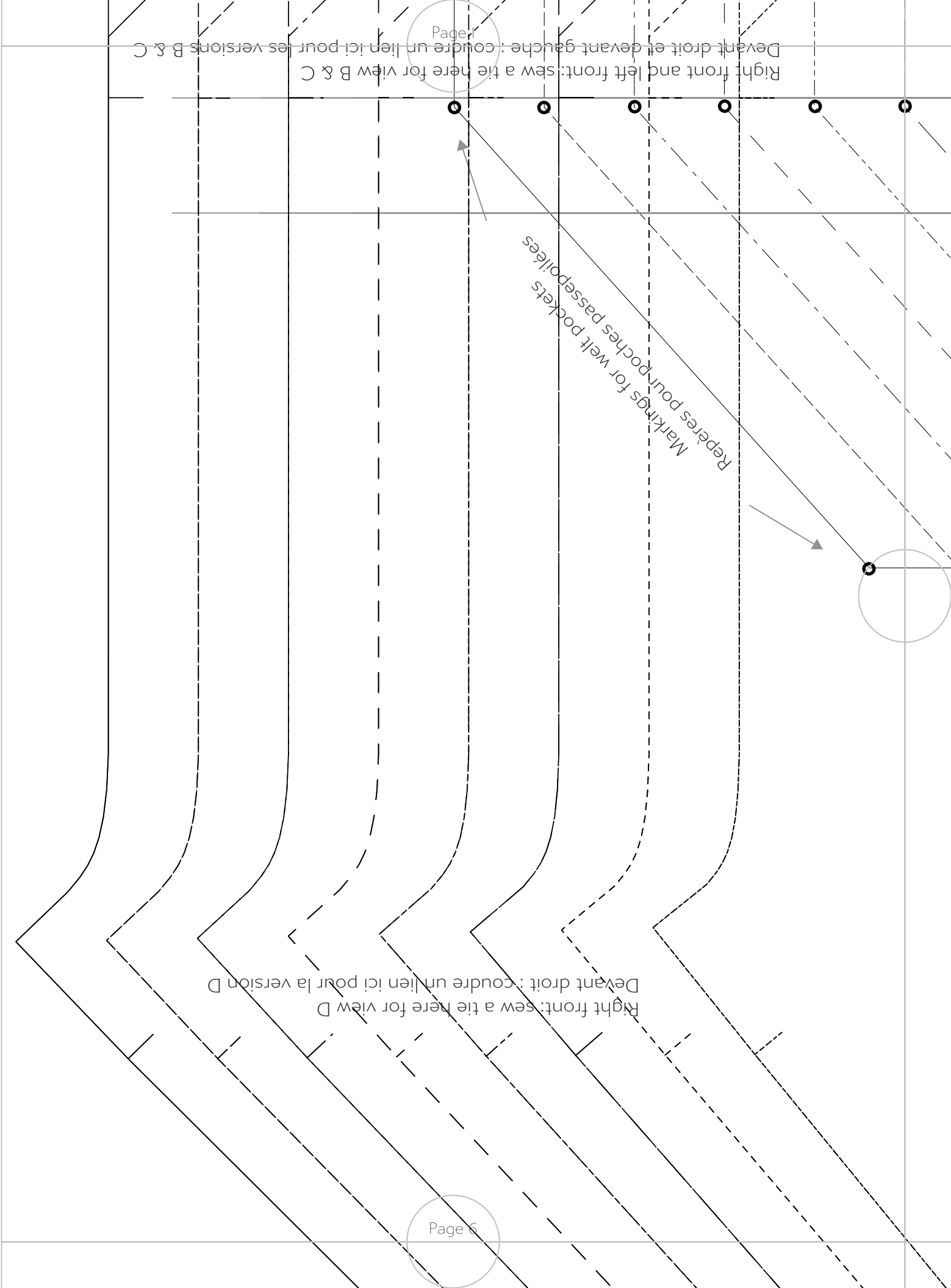
Cut here for views B, C & D  
Couper ici pour versions B, C & D

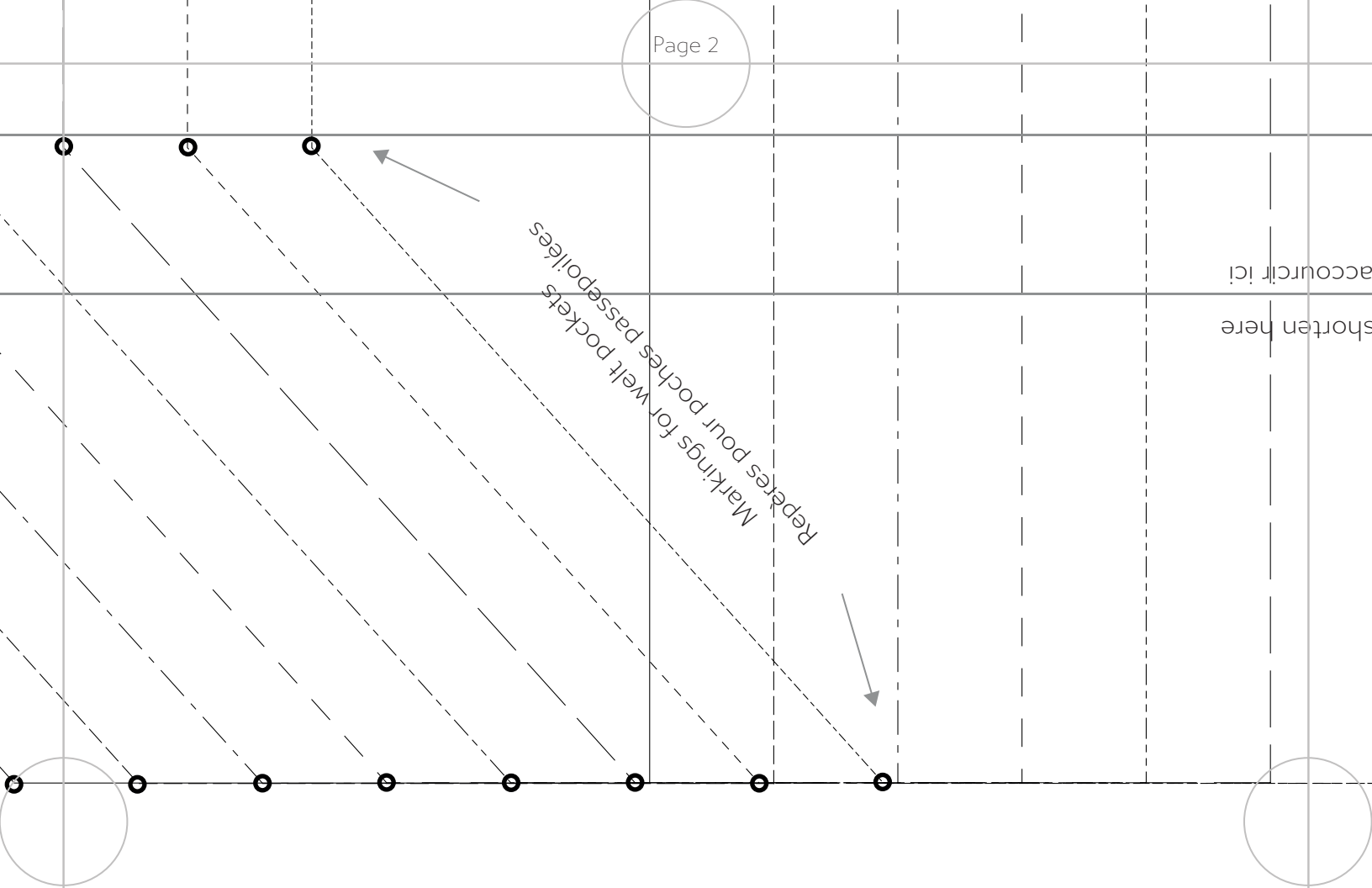
Cut here for view A  
Couper ici pour version A

Right front and left front: sew a tie here for view B & C  
Devant droit et devant gauche : coudre un lien ici pour les versions B & C

Reperes pour poches passepoilées  
Markings for welt pockets

Right front: sew a tie here for view D  
Devant droit : coudre un lien ici pour la version D





accourir ici  
shorten here

Markings for welt pockets  
Repères pour poches passepoilées

FRONT  
CUT x2  
DEVANT  
COUPER x2

017 - COUILLAGE

**CAMIMADE**  
PATTERNS

Right front and left front: sew a  
tie here for view B & C  
Devant droit et devant gauche :

View C : sew the tunnel between these two lines  
Version C : coudre la coulisse entre ces deux lignes

Allonger ou raccourcir la

lengthen or shorten here

Cut here for view D  
Couper ici pour version D



l between these two lines  
ouilisse entre ces deux lignes



View C: sew the tunnel between  
Version C : coudre la coulisse en

Allonger ou raccourcir ici!

Lengthen or shorten here

View a tie here for view A B & C  
: coudre un lien ici pour les versions A B & C

# CAMIMADE PATTERNS

## 017 - COQUILLAGE

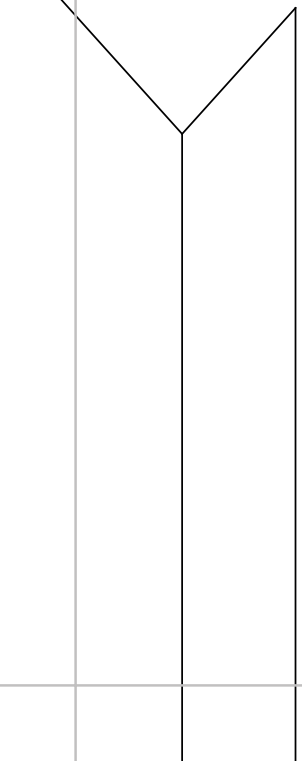
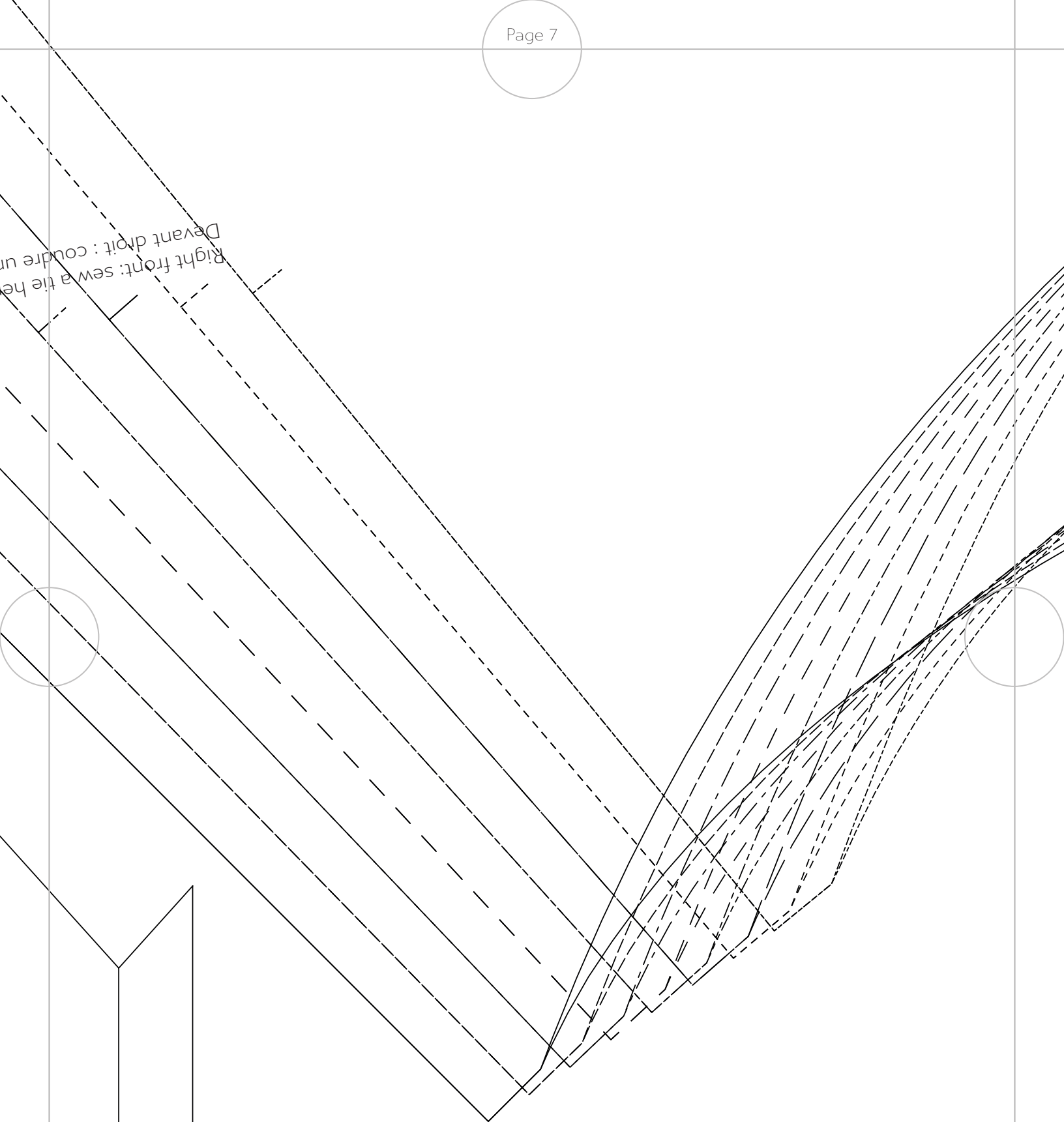
PATCHED POCKET STYLE I  
CUT x2

POCHE PLAQUÉES STYLE I  
COUPER x2

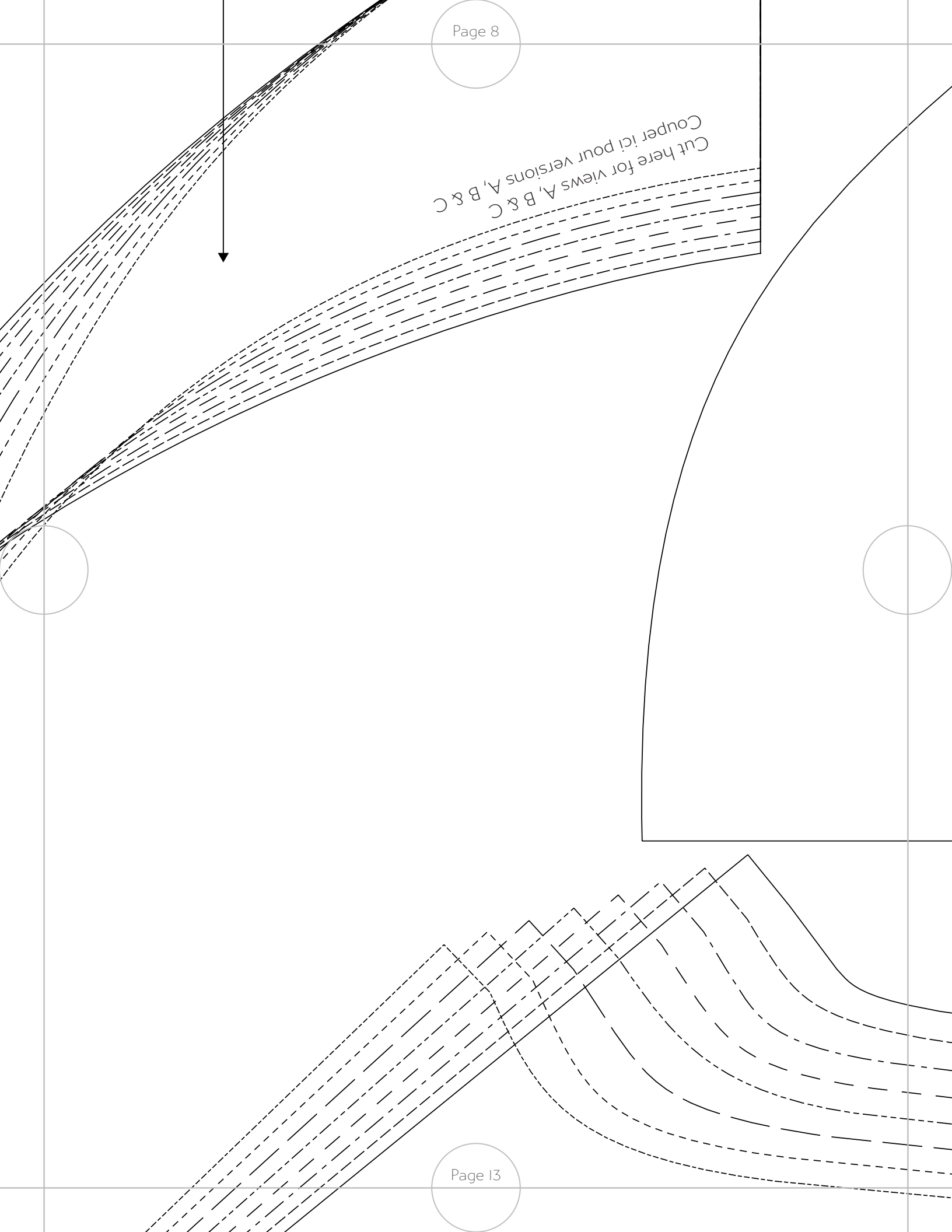
4

Seam allowance  
Marge de couture

Right front: sew a tie here  
Devant droit : coudre un



Cut here for views A, B & C  
Couper ici pour versions A, B & C



# CAMIMADE PATTERNS

## 017 - COQUILLAGE

POCKET BAG 2  
CUT x2

FOND DE POCHE 2  
COUPER x2

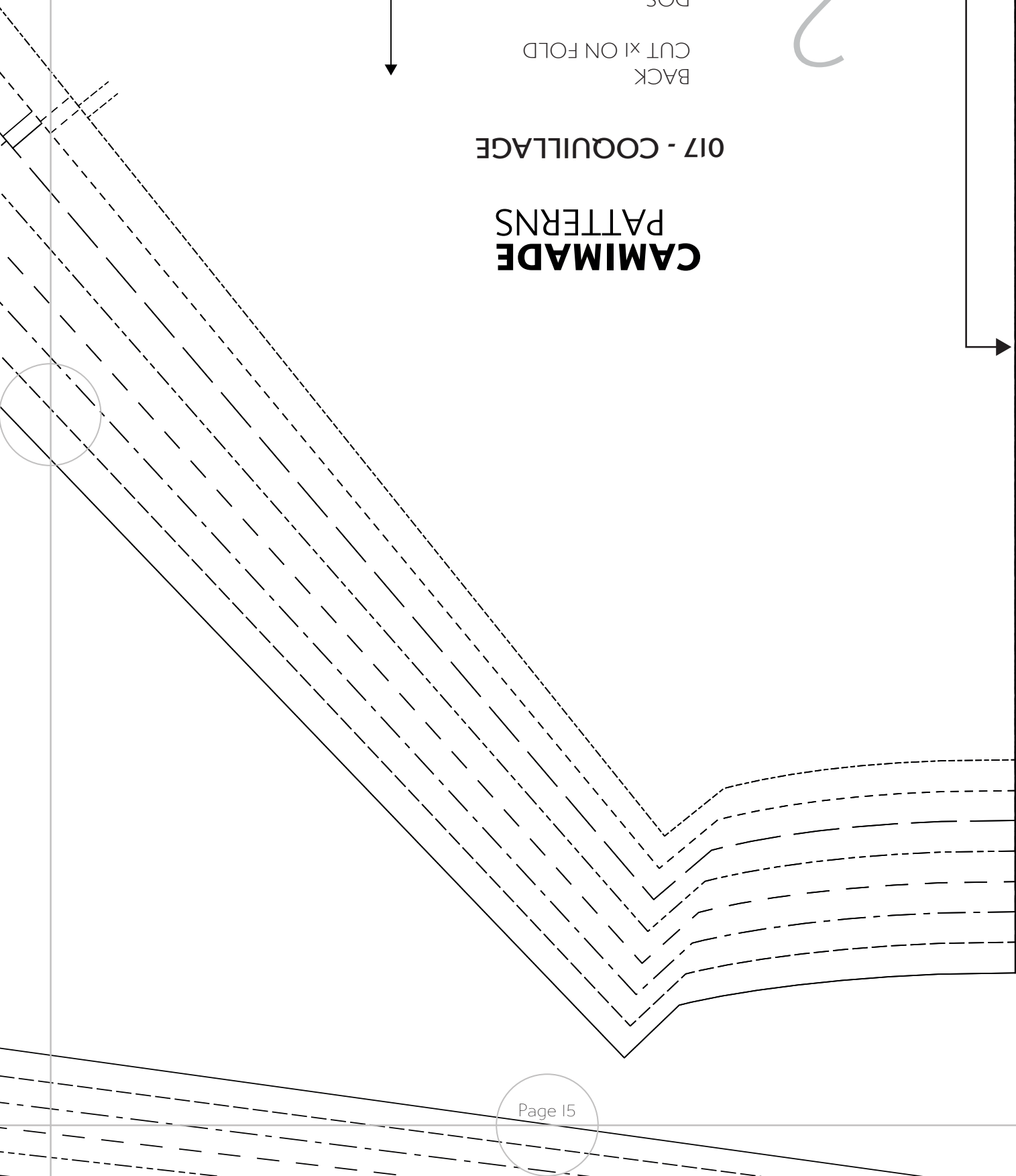
7

BACK  
CUT XI ON FOLD  
DOS  
COUPER XI SUR LE PLI

2

017 - COUILLAGE

**CAMMADE**  
PATTERNS



**CAMIMADE  
PATTERNS**

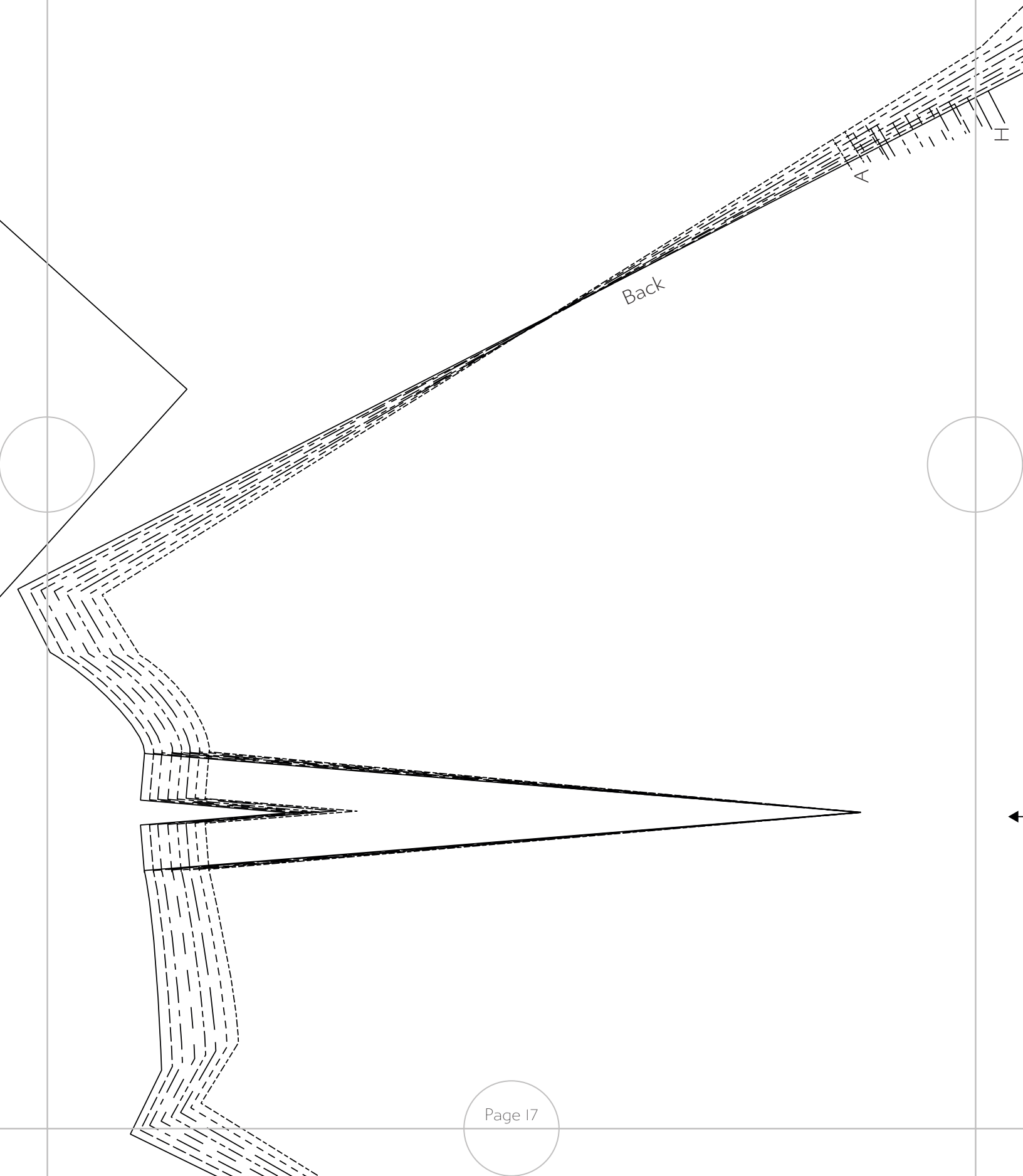
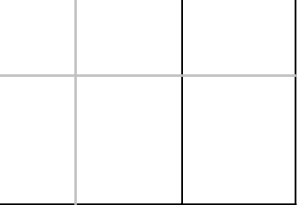
**017 - COQUILLAGE**

POCKET BAG 1  
CUT X2

FOND DE POCHE 1  
COUPER X2

6

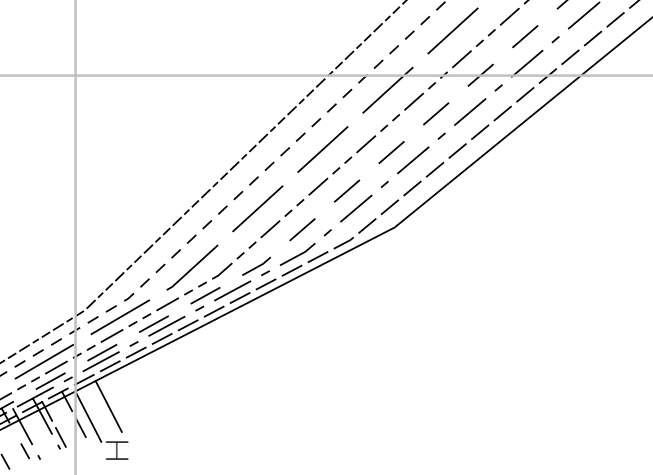




Back

A

H



# CAMIMADE PATTERNS

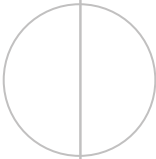
## 017 - COQUILLAGE

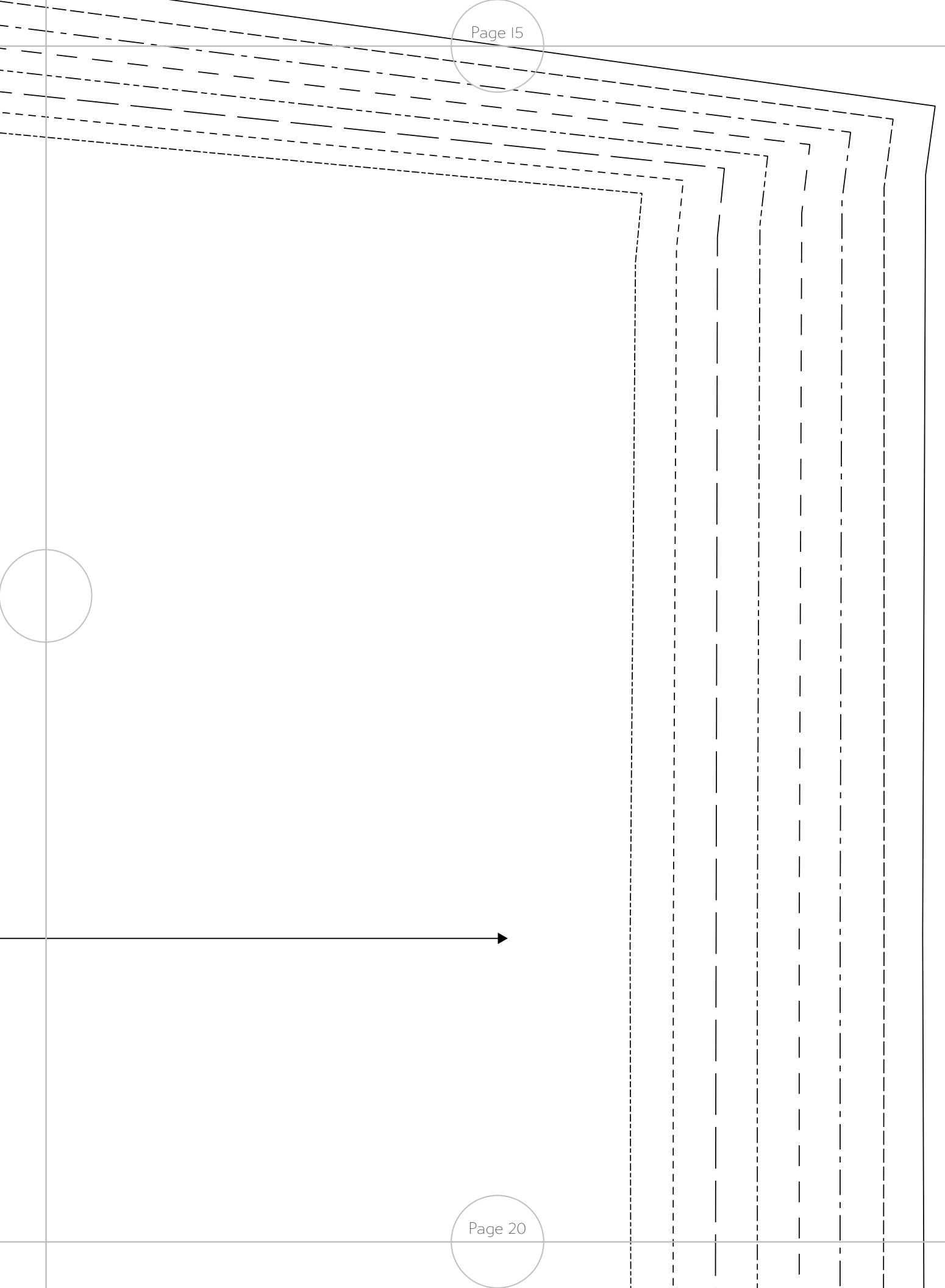
SLEEVE  
CUT x2

MANCHE  
COUPER x2

3







Seam allowance  
Marge de couture

5

**CAMIMADE**  
PATTERNS

**017 - COQUILLAGE**

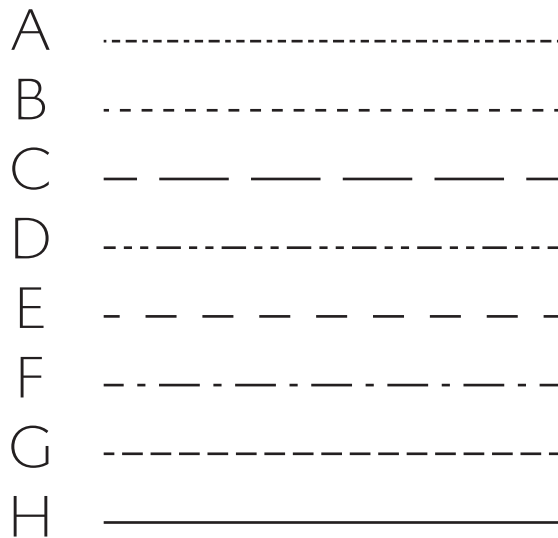
PATCHED POCKET STYLE 2  
CUT x2

POCHE PLAQUÉES STYLE 2  
COUPER x2

# CAMIMADE PATTERNS

## 017 - COQUILLAGE #CamimadeCoquillage

© 2023 Camimade Patterns  
www.camimade.com  
For personal use only  
Uniquement pour usage personnel



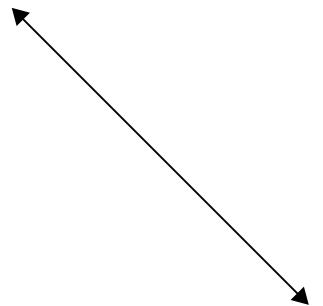
Test square / Carré de test  
10cm x 10cm / 4" x 4"

Left sleeve: sew a tie  
view A B & C  
Manche gauche : coudre un  
lien ici pour les versions A B

Left sleeve: sew a tie here  
for view D  
Manche gauche : coudre un  
lien ici pour la version D

# CAMIMADE PATTERNS

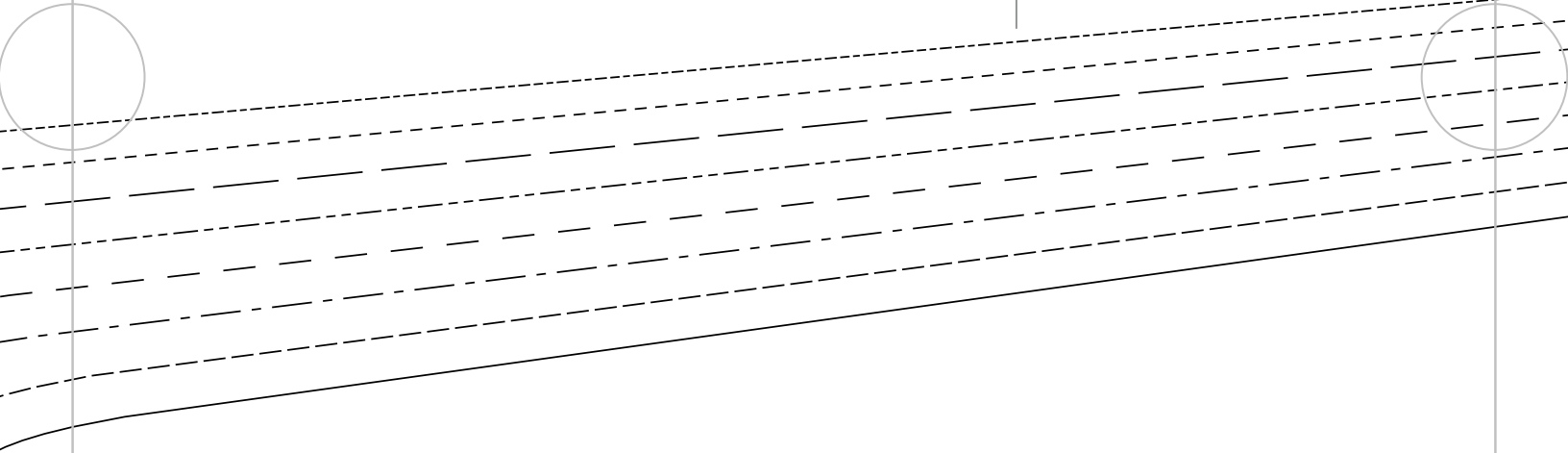
## 017 - COQUILLAGE



9

Lengthen or shorten here

Allonger ou raccourcir ici

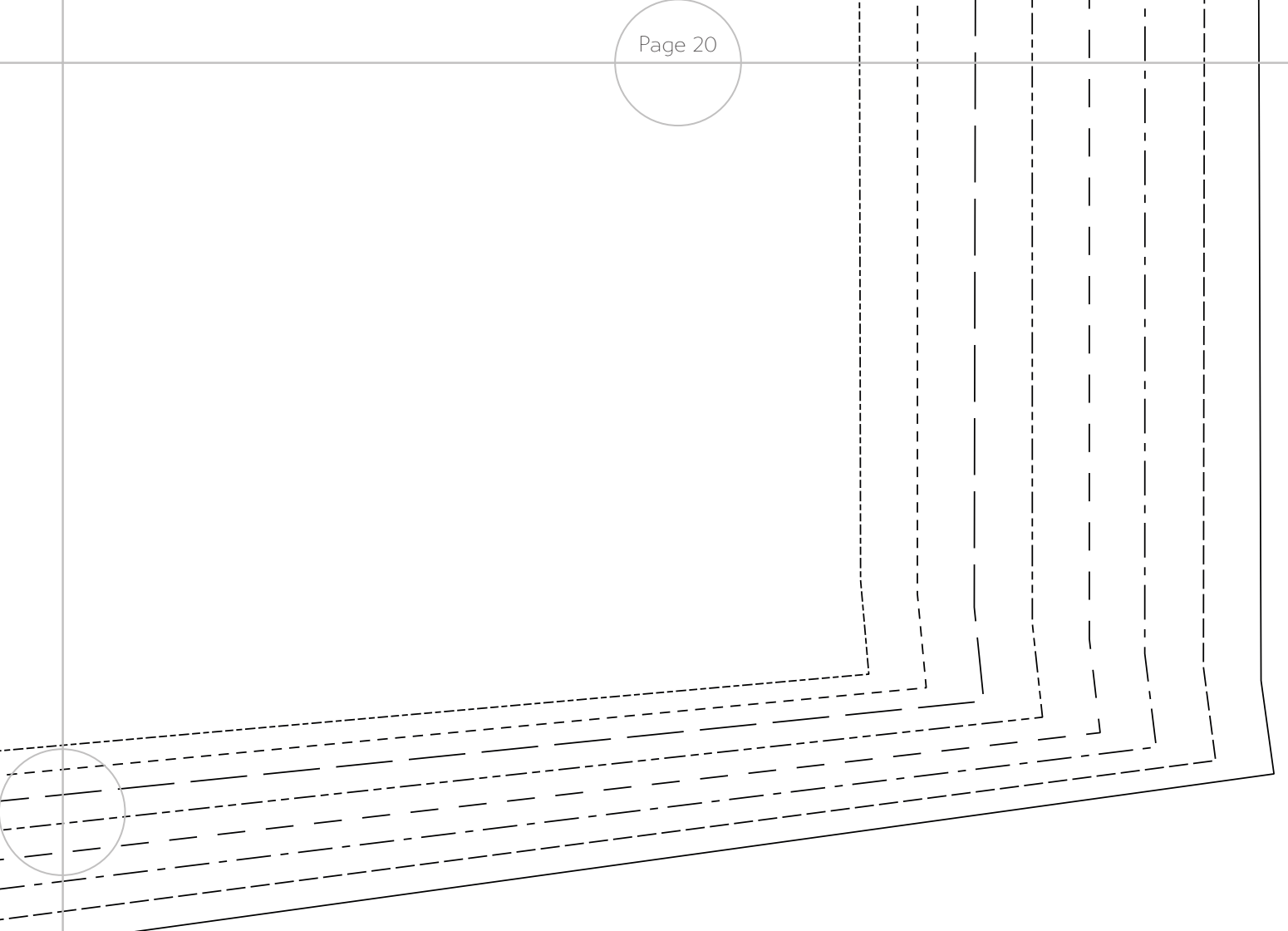




9

BIAS GUIDE  
CUT LENGTH INDICATED IN THE INSTRUCTIONS

GUIDE BIAIS  
COUPER LA LONGUEUR INDIQUEE DANS LES  
INSTRUCTIONS





 Fold here Plier ici	<b>CAMIMADE</b> <b>PATTERNS</b> <b>017 - COQUILLAGE</b>
	WELT CUT x2 + x2 INTERFACING  PASSEPOIL COUPER x2 + x2 ENTOILAGE